

STANDARD ARRIVAL CHART - INSTRUMENT (STAR) - ICAO

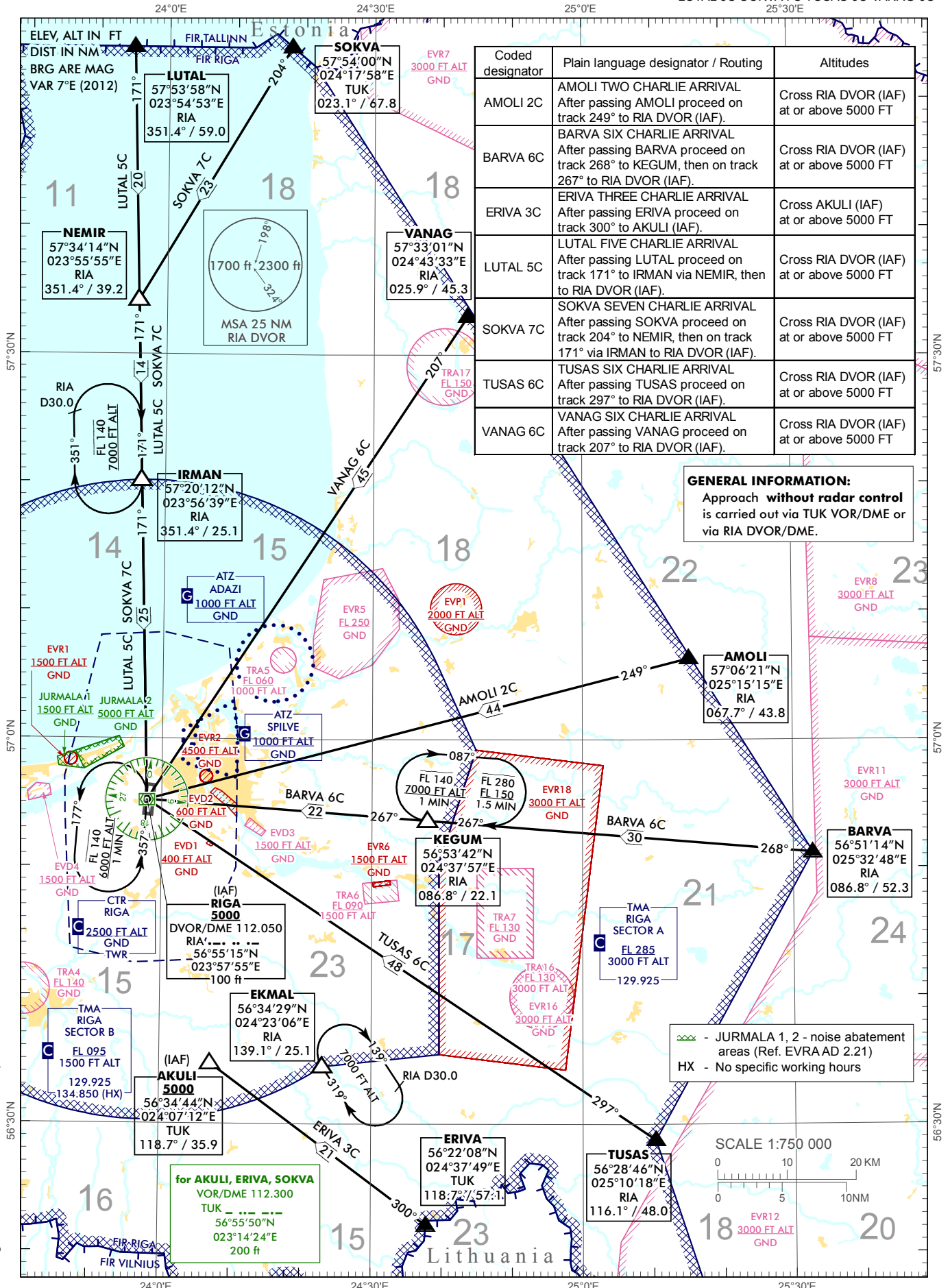
TRANSITION ALTITUDE
5000 ft

MAX IAS 250 kt BELOW FL100

APP 129.925
134.850 (HX)
TWR 118.105
ATIS 120.180

**RIGA (EVRA)
RWY 36**
(direction EAST)

AMOLI 2C BARVA 6C ERIVA 3C
LUTAL 5C SOKVA 7C TUSAS 6C VANAG 6C



Changes: TWR and ATIS FREQ updated, editorial.

INTENTIONALLY LEFT BLANK