

**STANDARD ARRIVAL CHART -
INSTRUMENT (STAR) - ICAO**

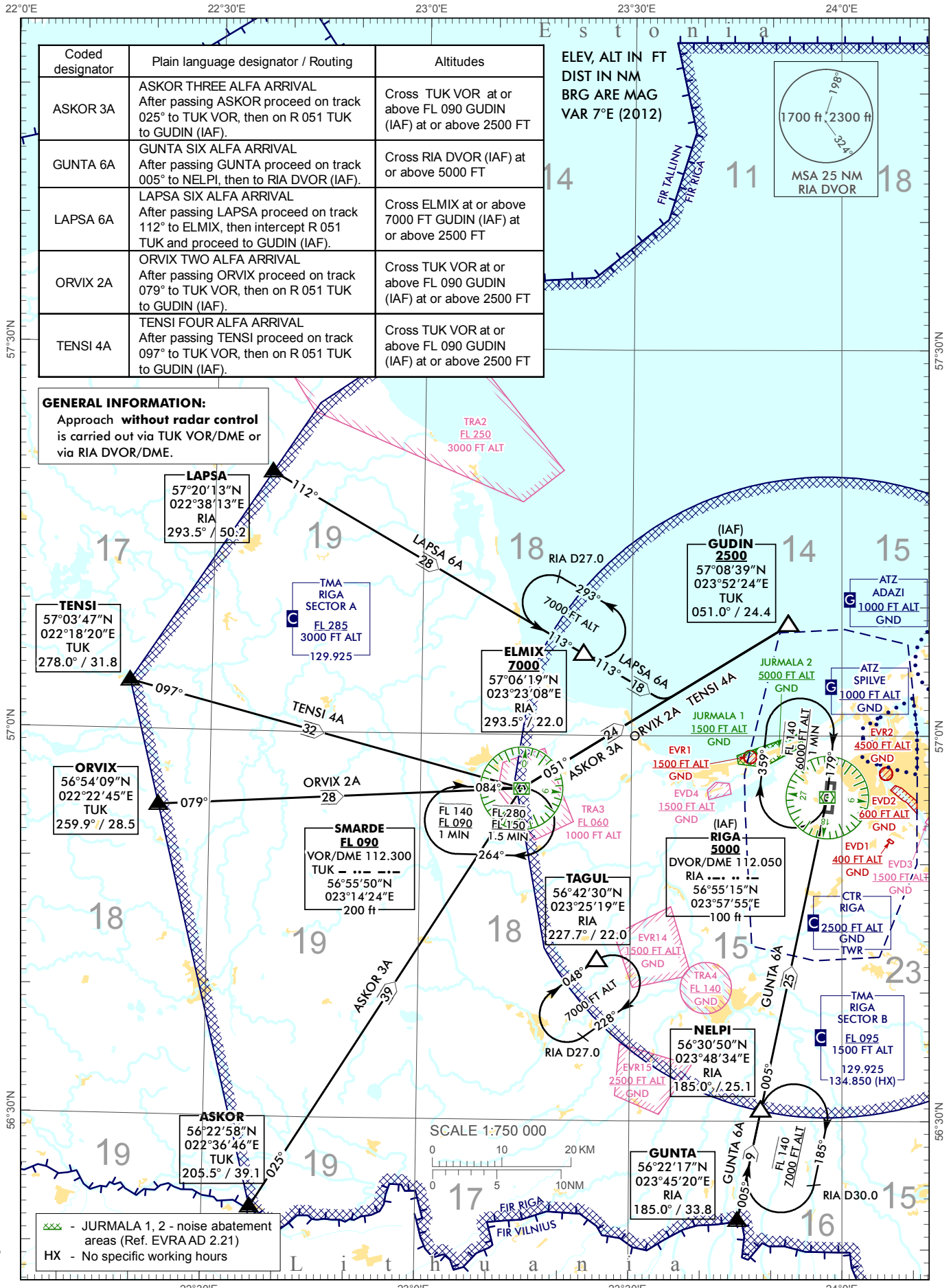
TRANSITION ALTITUDE
5000 ft

MAX IAS 250 kt BELOW FL100

APP 129.925
134.850 (HX)

TWR 118.105
ATIS 120.180

**RIGA (EVRA)
RWY 18**
direction (WEST)
ASKOR 3A GUNTA 6A LAPSA 6A
ORVIX 2A TENSI 4A



Changes: TWR and ATIS FREQ updated, editorial.

INTENTIONALLY LEFT BLANK