

**STANDARD DEPARTURE CHART —
INSTRUMENT (SID) — ICAO**

TRANSITION ALTITUDE
5000 ft

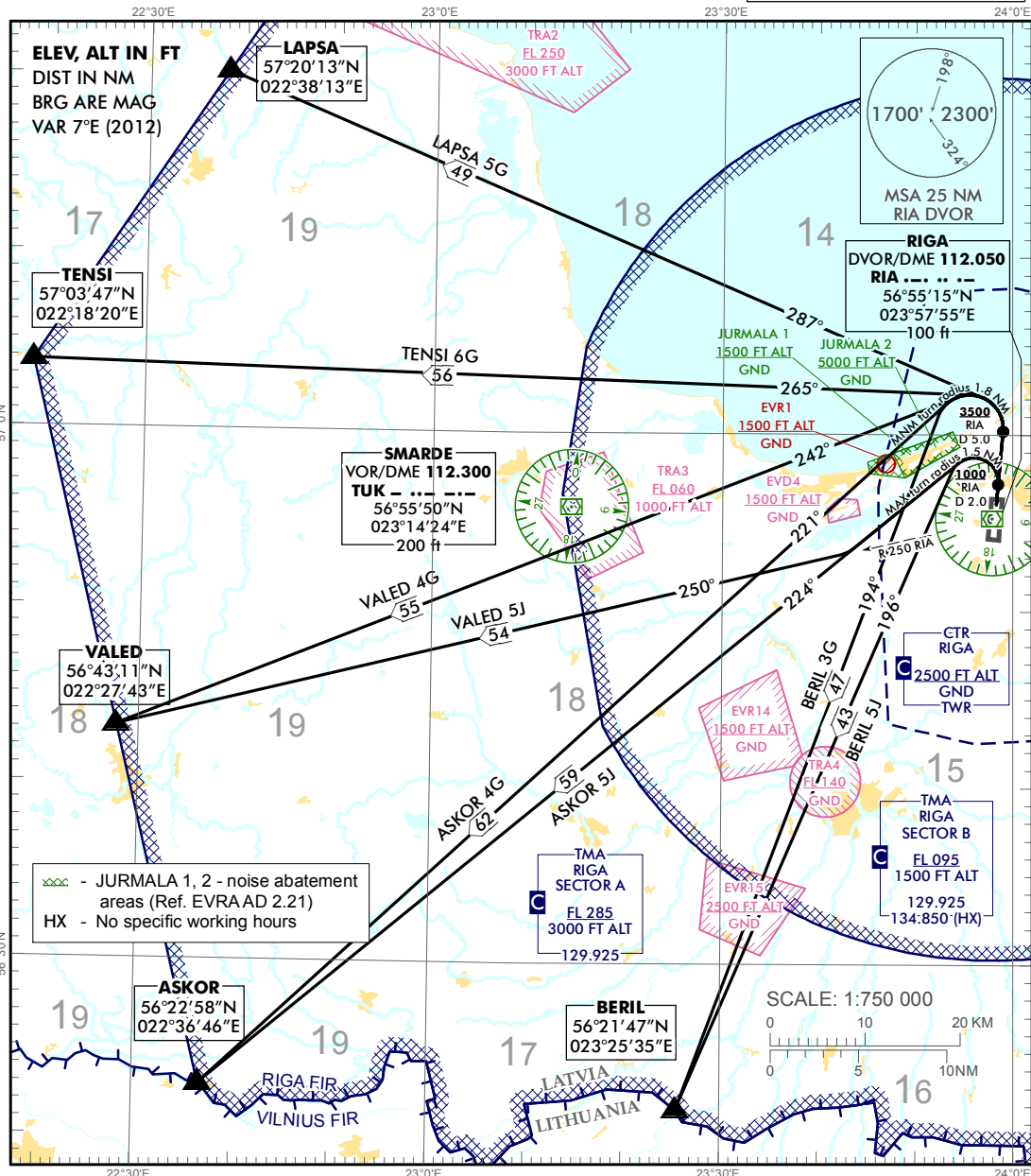
MAX IAS 250 kt BELOW FL 100

APP	129.925
	134.850 (HX)
TWR	118.105
ATIS	120.180
ACC	133.200

**RIGA (EVRA)
RWY 36**

(WESTBOUND)

ASKOR 4G ASKOR 5J BERIL 3G BERIL 5J
LAPSA 5G TENSI 6G VALED 4G VALED 5J



Coded designator	Plain language designator / Routing	Procedure Design Gradients (PDG) & Altitudes
ASKOR 4G	ASKOR FOUR GOLF DEPARTURE Climb on runway track. Not before 5.0 DME RIA at or above 3500 FT turn left (MNM turn radius 1.8 NM). Establish TR 221° to ASKOR.	After TP required PDG 7% to 4000 FT to avoid unnecessary noise disturbance.
ASKOR 5J	ASKOR FIVE JULIETT DEPARTURE Climb on runway track. At 2.0 DME RIA at or above 1000 FT turn left (MAX turn radius 1.5 NM). Establish TR 224° to ASKOR.	After TP required PDG 7% to 5000 FT to avoid unnecessary noise disturbance.
BERIL 3G	BERIL THREE GOLF DEPARTURE Climb on runway track. Not before 5.0 DME RIA at or above 3500 FT turn left (MNM turn radius 1.8 NM). Establish TR 194° to BERIL.	After TP required PDG 7% to 4000 FT to avoid unnecessary noise disturbance.
BERIL 5J	BERIL FIVE JULIETT DEPARTURE Climb on runway track. At 2.0 DME RIA at or above 1000 FT turn left (MAX turn radius 1.5 NM). Establish TR 196° to BERIL.	After TP required PDG 7% to 5000 FT to avoid unnecessary noise disturbance.
LAPSA 5G	LAPSA FIVE GOLF DEPARTURE Climb on runway track. Not before 5.0 DME RIA at or above 3500 FT turn left. Establish TR 287° to LAPSA.	After TP required PDG 7% to 4000 FT to avoid unnecessary noise disturbance.
TENSI 6G	TENSI SIX GOLF DEPARTURE Climb on runway track. Not before 5.0 DME RIA at or above 3500 FT turn left. Establish TR 265° to TENSI.	After TP required PDG 7% to 4000 FT to avoid unnecessary noise disturbance.
VALED 4G	VALED FOUR GOLF DEPARTURE Climb on runway track. Not before 5.0 DME RIA at or above 3500 FT turn left (MNM turn radius 1.8 NM). Establish TR 242° to VALED.	After TP required PDG 7% to 4000 FT to avoid unnecessary noise disturbance.
VALED 5J	VALED FIVE JULIETT DEPARTURE Climb on runway track. At 2.0 DME RIA at or above 1000 FT turn left (MAX turn radius 1.5 NM) on TR 224°. Intercept R 250 RIA to VALED.	After TP required PDG 7% to 5000 FT to avoid unnecessary noise disturbance.

For detailed description of the conditions and flights procedures refer to AIP EVRA AD 2.22.

NOTE:

1. Departure turn limited to MAX IAS 220 kt (ACFT CAT C, D);
2. Initial climb clearance 4000 FT unless otherwise is instructed by TWR;
3. Contact APP not later than passing 1500 FT after take-off;
4. Contact APP on 129.925 MHz unless other frequency assigned by TWR;
5. All SIDs - Radar surveilled;
6. If unable to comply SID contact ATC;
7. SIDs ASKOR 5J, BERIL 5J, VALED 5J only for CAT A, B, C;
8. SIDs ASKOR 5J, BERIL 5J, VALED 5J departure turn limited to MAX IAS 180 kt (ACFT CAT C).

Changes: TWR, ATIS frequency updated.

INTENTIONALLY LEFT BLANK