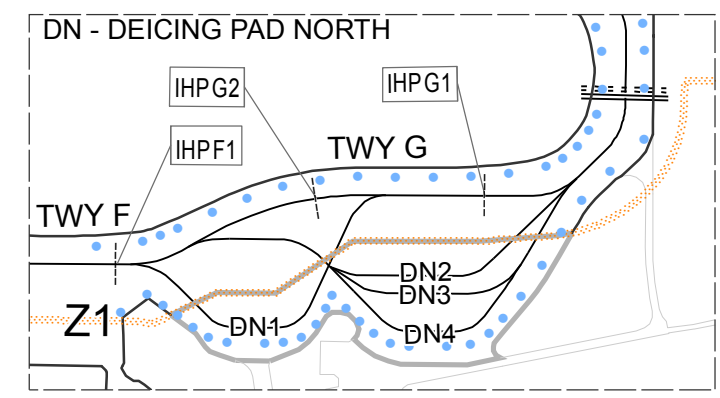
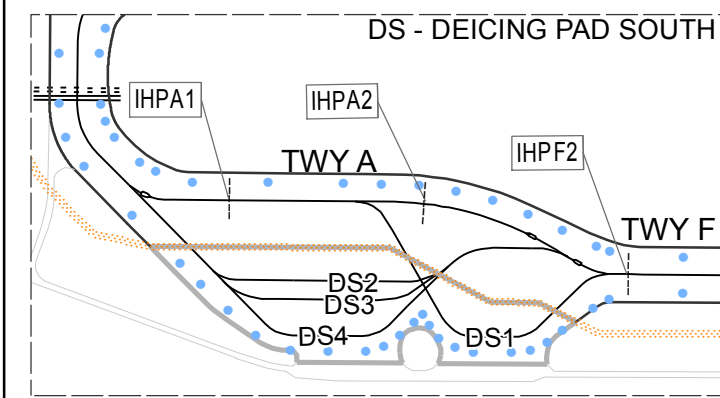
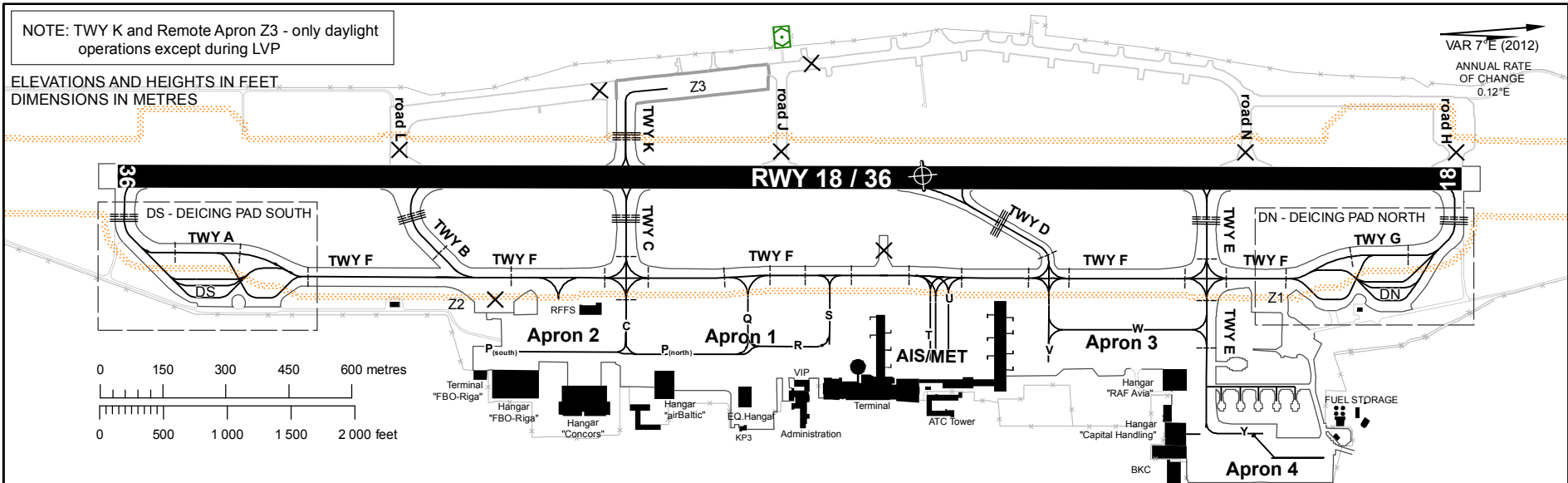


**AERODROME GROUND
MOVEMENT CHART - ICAO**

APRONS ELEV 33 FT

TWR	118.105	APRON	131.600
GMC	118.805	ATIS	120.180

RIGA



Changes: TWR, GMC, ATIS frequency updated.

REMARK:
The rapid-exit TWY D is designed for Code C (MAX wingspan 36 m) or smaller ACFT.

LEGEND

Taxiway edge light	●
Pavement boundary	—
Deicing pad boundary	—
Service road	—
Fence	××××

TWY	WIDTH	SURFACE	BEARING STRENGTH
A, E	23 M	ASPH	PCN 89/F/C/X/T
B, K	23 M	CONC+ASPH	PCN 84/F/A/W/T
C	23 M	CONC+ASPH	PCN 89/F/C/W/T
D	18 M	ASPH	PCN 50/F/C/X/T
F	23 M	CONC+ASPH	PCN 64/F/A/W/T
G	23 M	CONC+ASPH	PCN 100/F/C/X/T

- Z1 - Isolated parking area CONC (available in emergencies)
- Z2 - Unused (CLSD)
- Z3 - Remote Apron (Engine test area, long term parking, military parking) CONC PCN 59/R/C/X/T
- DN - Deicing pad North
- DN1 - CONC PCN 56/R/C/W/T
- DN2-4 - CONC PCN 77/R/C/W/T
- DS - Deicing pad South
- DS1 - CONC PCN 56/R/C/W/T
- DS2-4 - CONC PCN 77/R/C/W/T
- H, J, L, N - Roads
- C, P, Q, R, S, T, U, U1, V, W, Y - Taxilanes

INTENTIONALLY LEFT BLANK