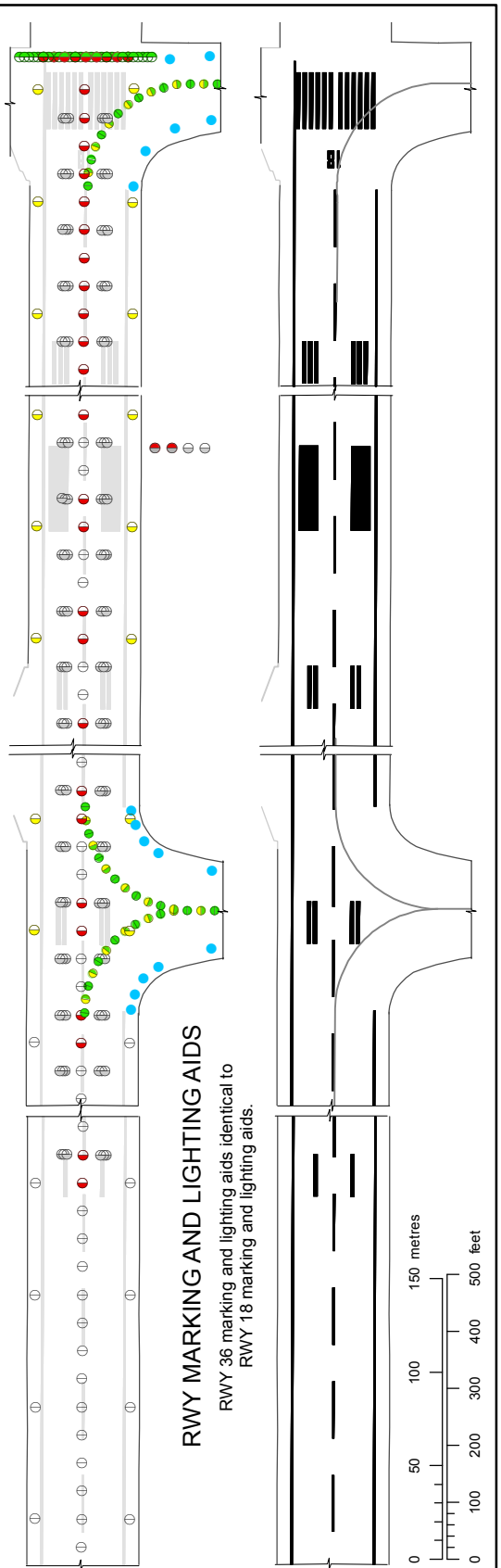
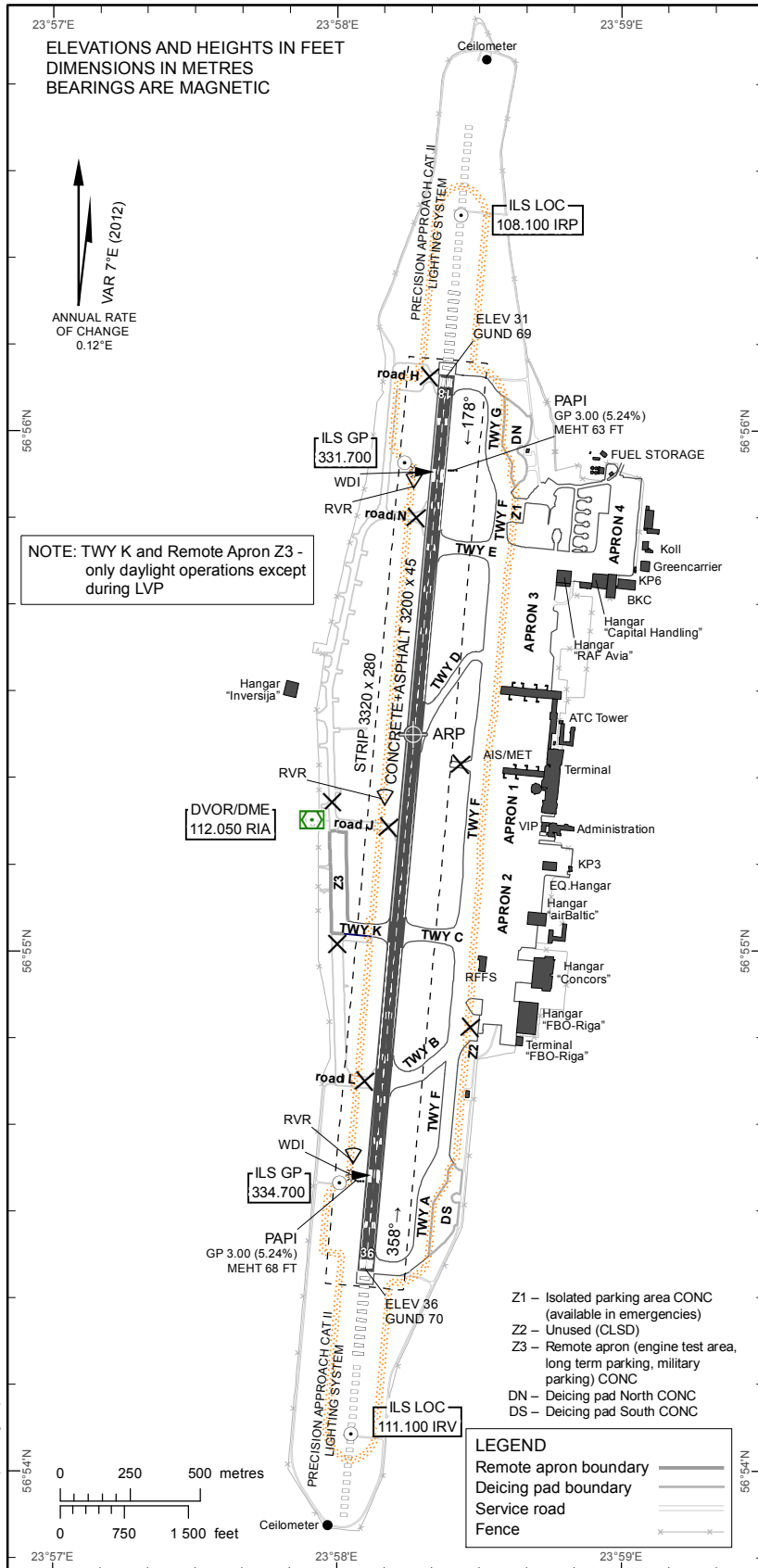


AERODROME CHART - ICAO 56°55'25"N 023°58'16"E ELEV 36 FT

TWR	118.105
GMC	118.805
APRON	131.600
ATIS	120.180

RIGA



Changes: TWR, GMC, ATIS frequency updated.

RWY	TRUE DIRECTION	THR	BEARING STRENGTH		
			PCN	Runways and taxiways	Remarks
18	185.18°	56°56'06.25"N 023°58'23.07"E	PCN 89/F/C/X/T	runways and taxiways A, E	1. APPROACH and RWY lighting see EVRAAD 2.14 2. RWY marking see EVRAAD 2.9 3. The rapid-exit TWY D is designed for Code C (max.wingspan 36m) or smaller ACFT.
			PCN 84/F/A/W/T	taxiways B, K	
			PCN 89/F/C/W/T	taxiway C	
			PCN 50/F/C/X/T	taxiway D	
36	005.17°	56°54'23.22"N 023°58'06.08"E	PCN 64/F/A/W/T	taxiway F	
			PCN 100/F/C/X/T	taxiway G	

Remarks:
 1. APPROACH and RWY lighting see EVRAAD 2.14
 2. RWY marking see EVRAAD 2.9
 3. The rapid-exit TWY D is designed for Code C (max.wingspan 36m) or smaller ACFT.

INTENTIONALLY LEFT BLANK