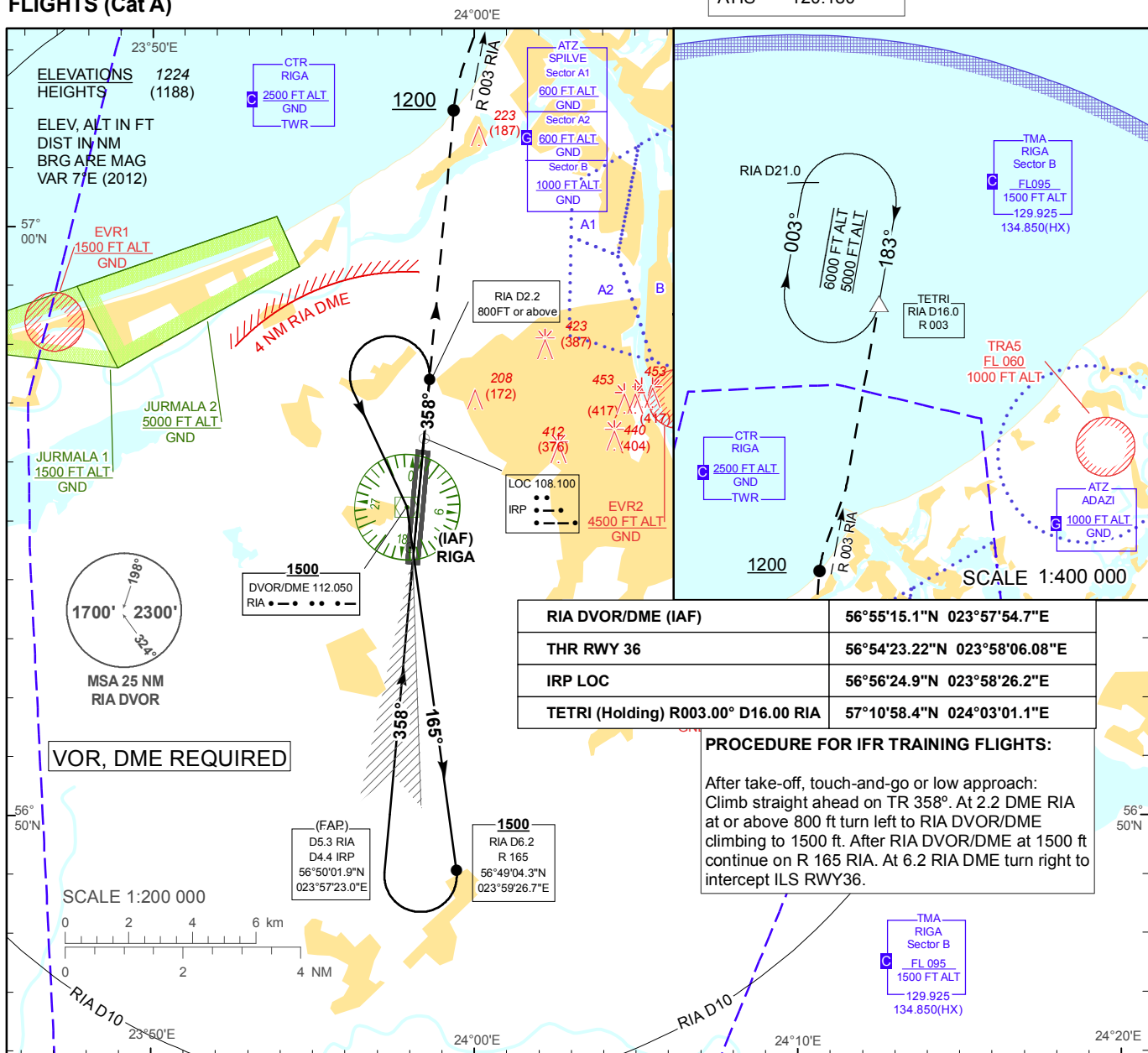


INSTRUMENT APPROACH CHART FOR TRAINING FLIGHTS (Cat A)

**AERODROME ELEV 36 ft
HEIGHTS RELATED TO
THR RWY 36 - ELEV 36 ft**

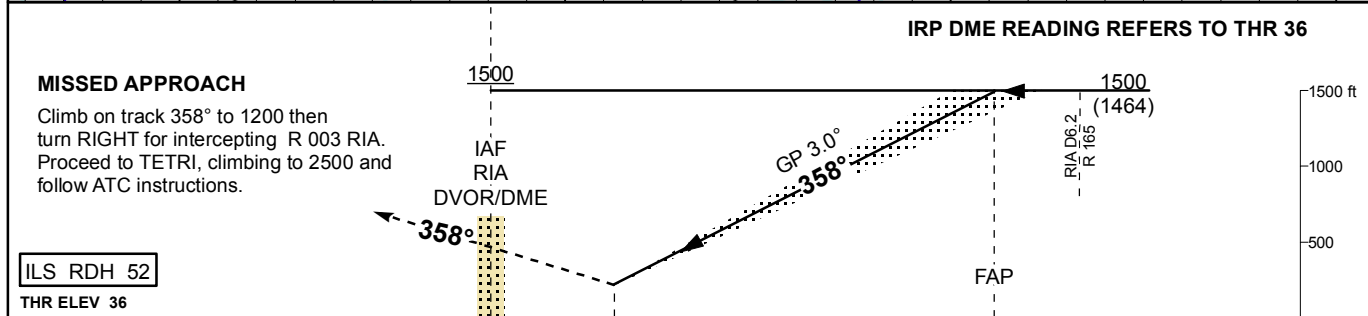
APP	129.925
TWR	134.850(HX)
TWR	118.105
ATIS	120.180

**RIGA (EVRA)
ILS RWY 36**



RIA DVOR/DME (IAF)	56°55'15.1"N 023°57'54.7"E
THR RWY 36	56°54'23.22"N 023°58'06.08"E
IRP LOC	56°56'24.9"N 023°58'26.2"E
TETRI (Holding) R003.00° D16.00 RIA	57°10'58.4"N 024°03'01.1"E

PROCEDURE FOR IFR TRAINING FLIGHTS:
After take-off, touch-and-go or low approach: Climb straight ahead on TR 358°. At 2.2 DME RIA at or above 800 ft turn left to RIA DVOR/DME climbing to 1500 ft. After RIA DVOR/DME at 1500 ft continue on R 165 RIA. At 6.2 RIA DME turn right to intercept ILS RWY36.



MISSED APPROACH		IRP DME READING REFERS TO THR 36							
Climb on track 358° to 1200 then turn RIGHT for intercepting R 003 RIA. Proceed to TETRI, climbing to 2500 and follow ATC instructions.									
ILS RDH 52									
THR ELEV 36									
NM from THR RWY 36		4 3 2 1 0 0.4 1 2 3 4 4.4 5 6 7							
Aircraft Category	A	DME IRP	7	6	5	4	3	2	1
Straight-in Approach OCA(H)	ILS Cat. I	DME RIA	7.9	6.9	5.9	4.9	3.9	2.9	1.9
		DIST THR	7	6	5	4	3	2	1
Circling		ALTITUDE	2360	2030	1700	1380	1050	730	410
		HEIGHT	(2324)	(1994)	(1664)	(1344)	(1014)	(694)	(374)
REMARK:									
- JURMALA 1, 2 - noise abatement areas (Ref. EVRAAD 2.21) HX - No specific working hours									
		GS	Kt	80	100	120	140	160	180
		Rate of descent	ft/min	420	530	640	740	850	960

Changes: TWR, ATIS frequency updated.

INTENTIONALLY LEFT BLANK