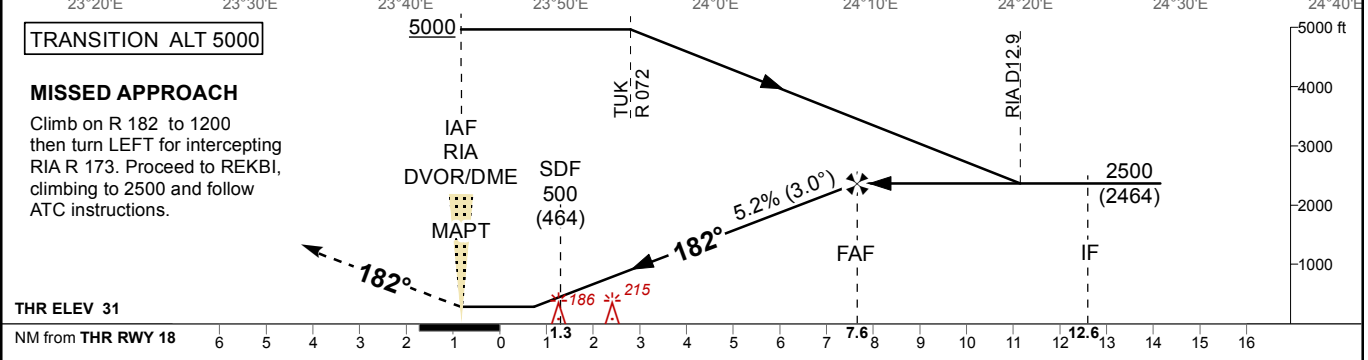
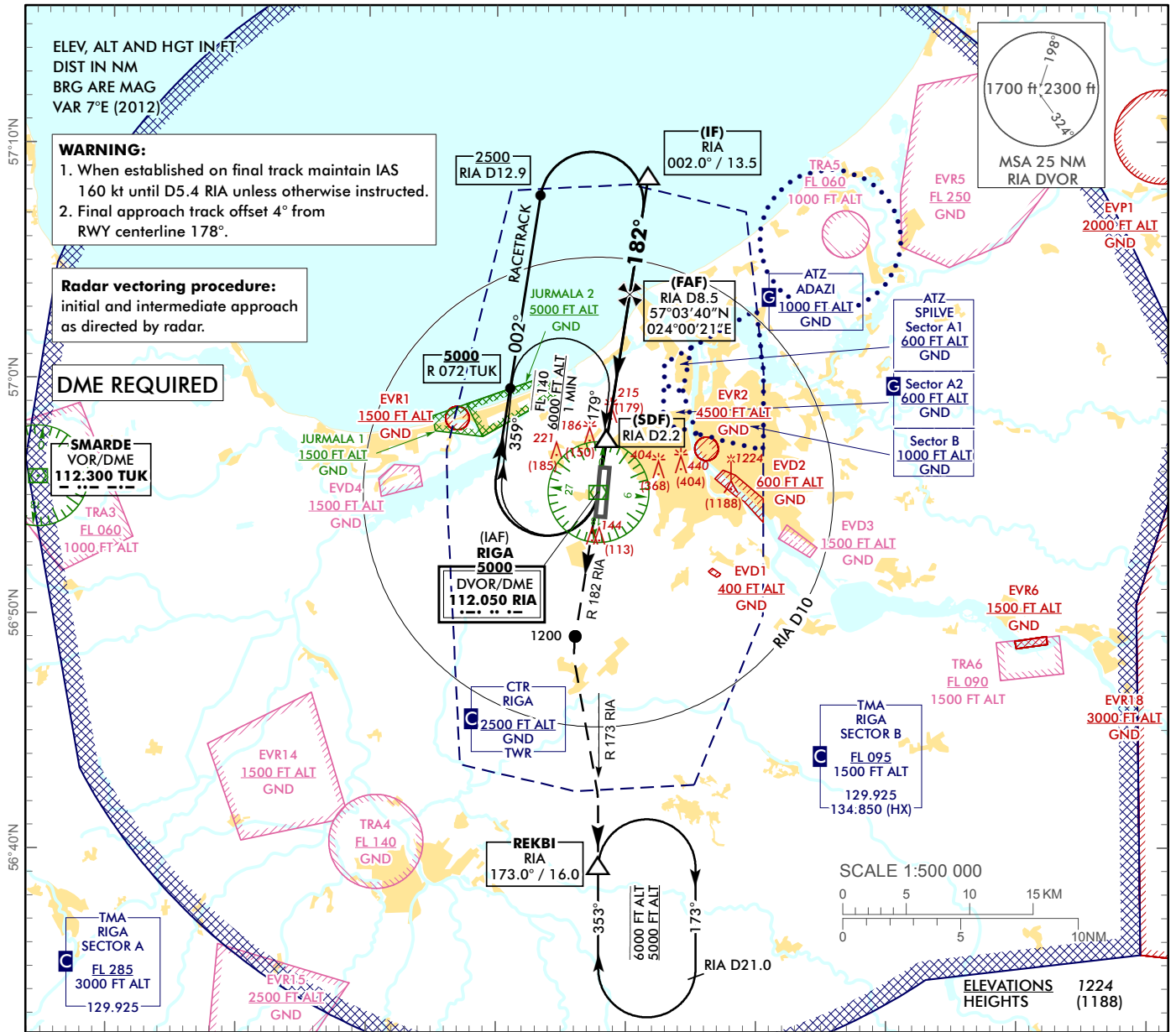


INSTRUMENT APPROACH CHART - ICAO

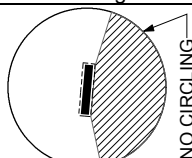
AERODROME ELEV 36 ft
HEIGHTS RELATED TO AD - ELEV 36 ft

APP	129.925
TWR	118.105
ATIS	120.180

RIGA (EVRA)
VOR RWY 18



OCA (H)		A	B	C	D	DME RIA	8	7	6	5	4	3	2
Straight-in Approach	VOR/DME	410 (380)				DME THR	7.1	6.1	5.1	4.1	3.1	2.1	1.1
	Altitude					ALTITUDE	2330	2010	1690	1380	1060	750	430
Circling		530 (500)		730 (690)		HEIGHT	(2294)	(1974)	(1654)	(1344)	(1024)	(714)	(394)
Timing not authorized for defining the MAPT													
						GS	kt	80	100	120	140	160	180
						Rate of descent (5.2%)	ft/min	420	530	630	740	840	950
						FAF-MAPT (8.5 NM)	min:sec	06:25	05:08	04:16	03:40	03:12	02:51



REMARK:
 --- JURMALA 1, 2 - noise abatement areas (Ref. EVRAAD 2.21)
 HX - No specific working hours

For data tabulation see verso

Changes: TWR and ATIS FREQ updated, editorial.

RIGA (EVRA)

VOR RWY 18

AERONAUTICAL DATA TABULATION

VOR approach to RWY 18 from RIA DVOR/DME (IAF)	
Fix/point	Coordinates
RIA DVOR/DME (IAF), (MAPT)	56°55'15.1"N 023°57'54.7"E
(IF) R002.00° D13.54 RIA	57°08'35.9"N 024°01'48.0"E
(FAF) R002.00° D8.54 RIA	57°03'40.2"N 024°00'21.5"E
(SDF) R002.00° D2.21 RIA	56°57'25.7"N 023°58'32.6"E
REKBI (Holding) R172.99° D16.01 RIA	56°39'16.7"N 023°57'55.0"E
THR RWY 18	56°56'06.25"N 023°58'23.07"E
Final approach descent angle is 2.98°	