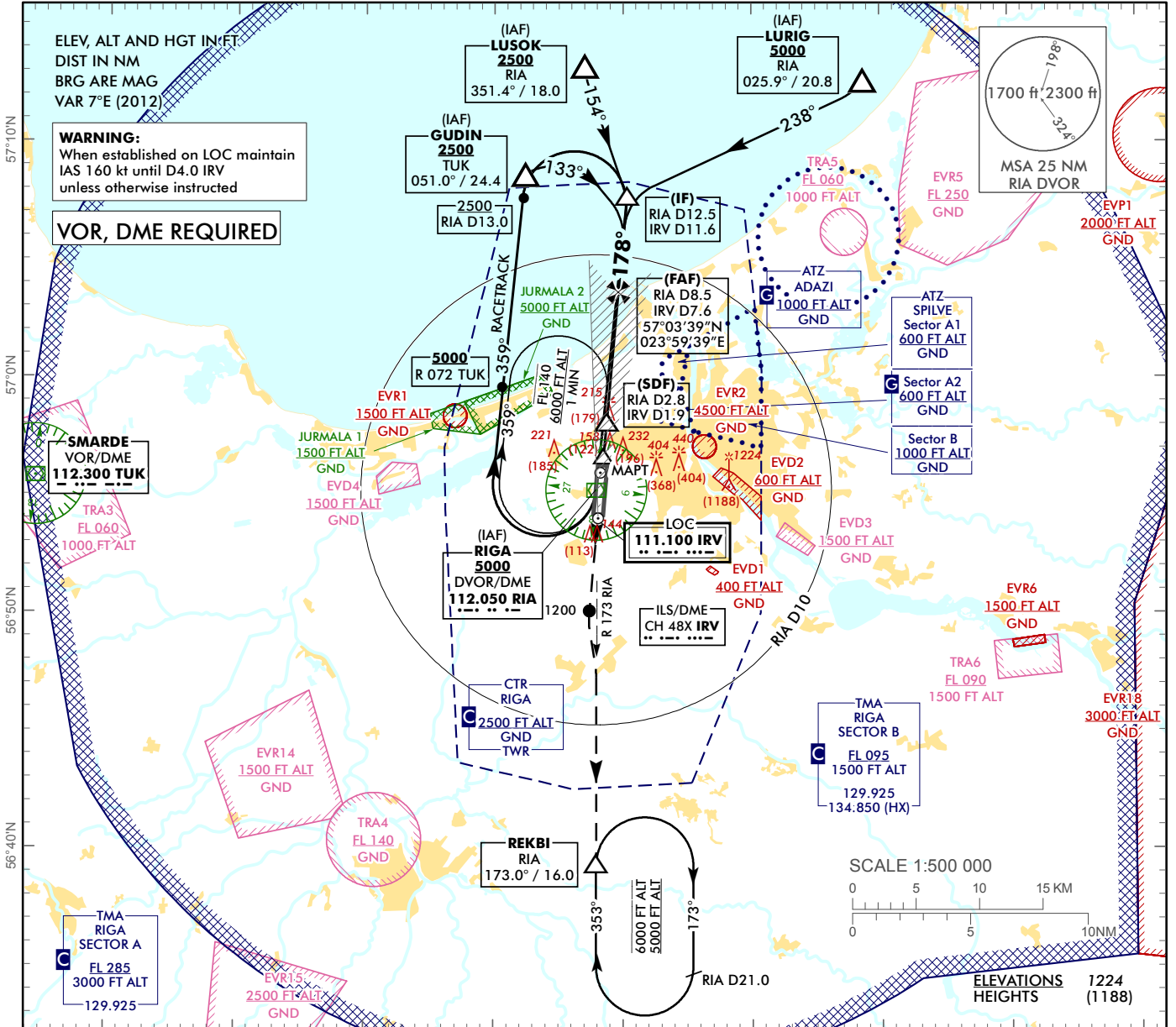


**INSTRUMENT  
APPROACH  
CHART - ICAO**

**AERODROME ELEV 36 ft**  
HEIGHTS RELATED TO  
AD - ELEV 36 ft

APP 129.925  
TWR 134.850 (HX)  
ATIS 118.105  
120.180

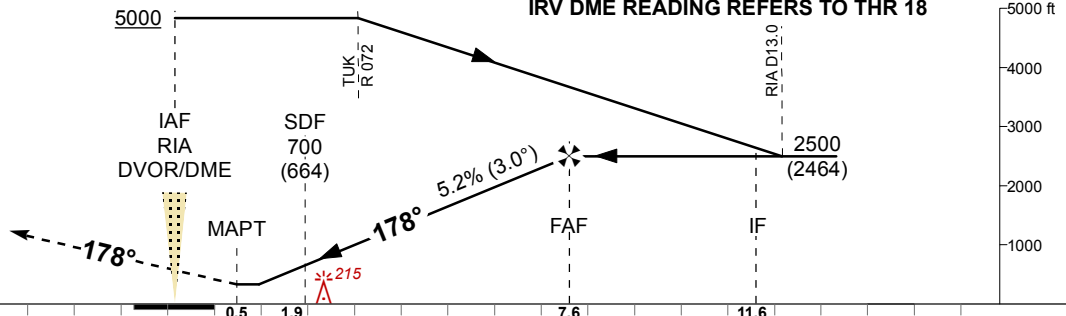
**RIGA (EVRA)**  
**LOC RWY 18**



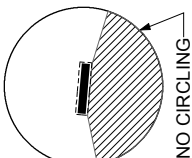
TRANSITION ALT 5000

**MISSED APPROACH**

Climb on track 178° to 2000 then turn LEFT for intercepting RIA R 173. Proceed to REKBI, climbing to 2500 and follow ATC instructions.



THR ELEV 31		NM from THR RWY 18											
OCA (H)		A	B	C	D	DME IRV	7	6	5	4	3	2	1
Straight-in Approach	LOC	410 (370)				DME RIA	7.9	6.9	5.9	4.9	3.9	2.9	1.9
						DIST THR	7	6	5	4	3	2	1
Circling		530 (500)		730 (690)		ALTITUDE	2310	1990	1670	1350	1040	720	400
						HEIGHT	(2274)	(1954)	(1634)	(1314)	(1004)	(684)	(364)
Timing not authorized for defining the MAPT													
		GS		kt	80	100	120	140	160	180			
		Rate of descent (5.2%)		ft/min	420	530	640	740	850	960			
		FAF-MAPT (7.1 NM)		min:sec	05:20	04:16	03:33	03:03	02:40	02:22			



**REMARK:**  
 - JURMALA 1, 2 - noise abatement areas (Ref. EVRA AD 2.21)  
 HX - No specific working hours

Changes: TWR and ATIS FREQ updated, editorial.

RIGA (EVRA)

LOC RWY 18

AERONAUTICAL DATA TABULATION

LOC approach to RWY18 from RIA DVOR/DME, GUDIN, LURIG, LUSOK	
Fix/point	Coordinates
RIA DVOR/DME (IAF)	56°55'15.1"N 023°57'54.7"E
GUDIN (IAF) R051.00° D24.40 TUK	57°08'38.9"N 023°52'24.0"E
LURIG (IAF) R025.92° D20.77 RIA	57°12'37.6"N 024°18'40.4"E
LUSOK (IAF) R351.43° D18.05 RIA	57°13'15.3"N 023°57'00.1"E
RIA D12.47 IRV D11.59 (IF)	57°07'37.4"N 024°00'18.5"E
RIA D8.48 IRV D7.60 (FAF)	57°03'39.5"N 023°59'38.7"E
RIA D2.83 IRV D1.95 (SDF)	56°58'02.3"N 023°58'42.5"E
RIA D1.39 IRV D0.50 (MAPT)	56°56'36.1"N 023°58'28.2"E
REKBI (Holding) R172.99° D16.01 RIA	56°39'16.7"N 023°57'55.0"E
THR RWY 18	56°56'06.25"N 023°58'23.07"E
IRV LOC	56°54'04.3"N 023°58'03.0"E
TUK VOR/DME	56°55'50.1"N 023°14'23.9"E
Final approach descent angle is 3.00°	