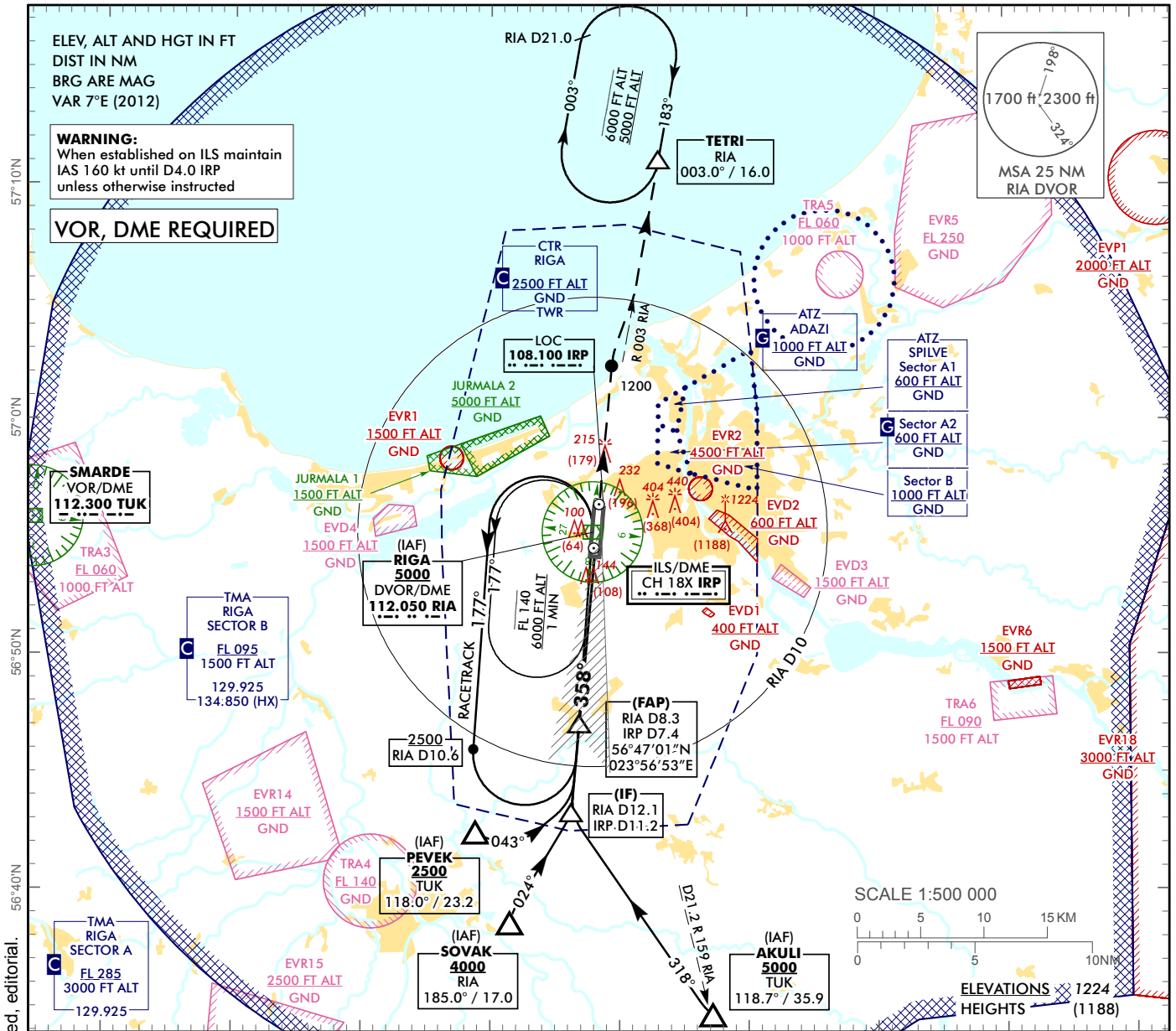


**INSTRUMENT
APPROACH
CHART - ICAO**

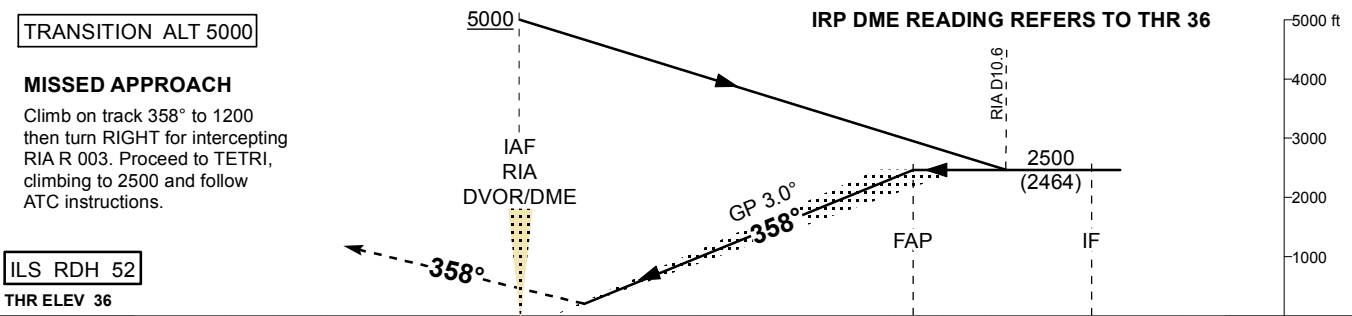
AERODROME ELEV 36 ft
HEIGHTS RELATED TO
THR RWY 18 - ELEV 36 ft

APP 129.925
134.850 (HX)
TWR 118.105
ATIS 120.180

RIGA (EVRA)
ILS RWY 36



Changes: TWR and ATIS FREQ updated, IAF AKULI distance updated, editorial.



TRANSITION ALT 5000

MISSED APPROACH
Climb on track 358° to 1200 then turn RIGHT for intercepting RIA R 003. Proceed to TETRI, climbing to 2500 and follow ATC instructions.

ILS RDH 52
THR ELEV 36

NM from THR RWY 36		8	7	6	5	4	3	2	1	0	1	2	3	4	5	6	7	7.4	8	9	10	11	11.2	12	13	14
OCA (H)		A	B	C	D	DME IRP	7	6	5	4	3	2	1													
Straight-in Approach	ILS Cat I	236 (200)				DME RIA	7.9	6.9	5.9	4.9	3.9	2.9	1.9													
	ILS Cat II	(61)	(79)	(91)	(106)	DIST THR	7	6	5	4	3	2	1													
Circling		530 (500)		730 (690)		ALTITUDE	2360	2030	1700	1380	1050	730	410													
						HEIGHT	(2324)	(1994)	(1664)	(1344)	(1014)	(694)	(374)													
						GS	kt	80	100	120	140	160	180													
						Rate of descent	ft/min	420	530	640	740	850	960													

REMARK:
 [Symbol] - JURMALA 1, 2 - noise abatement areas (Ref. EVRA AD 2.21)
 HX - No specific working hours

For data tabulation see verso

RIGA (EVRA)

ILS RWY 36

AERONAUTICAL DATA TABULATION

ILS approach to RWY36 from RIA DVOR/DME, AKULI, PEVEK, SOVAK	
Fix/point	Coordinates
RIA DVOR/DME (IAF)	56°55'15.1"N 023°57'54.7"E
AKULI (IAF) R118.68° D35.95 TUK	56°34'43.5"N 024°07'12.3"E
PEVEK (IAF) R118.00° D23.16 TUK	56°42'29.7"N 023°48'50.1"E
SOVAK (IAF) R184.95° D17.02 RIA	56°38'37.8"N 023°51'31.5"E
RIA D8.29 IRP D7.42 (FAP)	56°47'00.5"N 023°56'53.2"E
RIA D12.10 IRP D11.24 (IF)	56°43'13.0"N 023°56'15.9"E
TETRI (Holding) R003.00° D16.00 RIA	57°10'58.4"N 024°03'01.1"E
THR RWY 36	56°54'23.22"N 023°58'06.08"E
IRP LOC	56°56'24.9"N 023°58'26.2"E
TUK VOR/DME	56°55'50.1"N 023°14'23.9"E