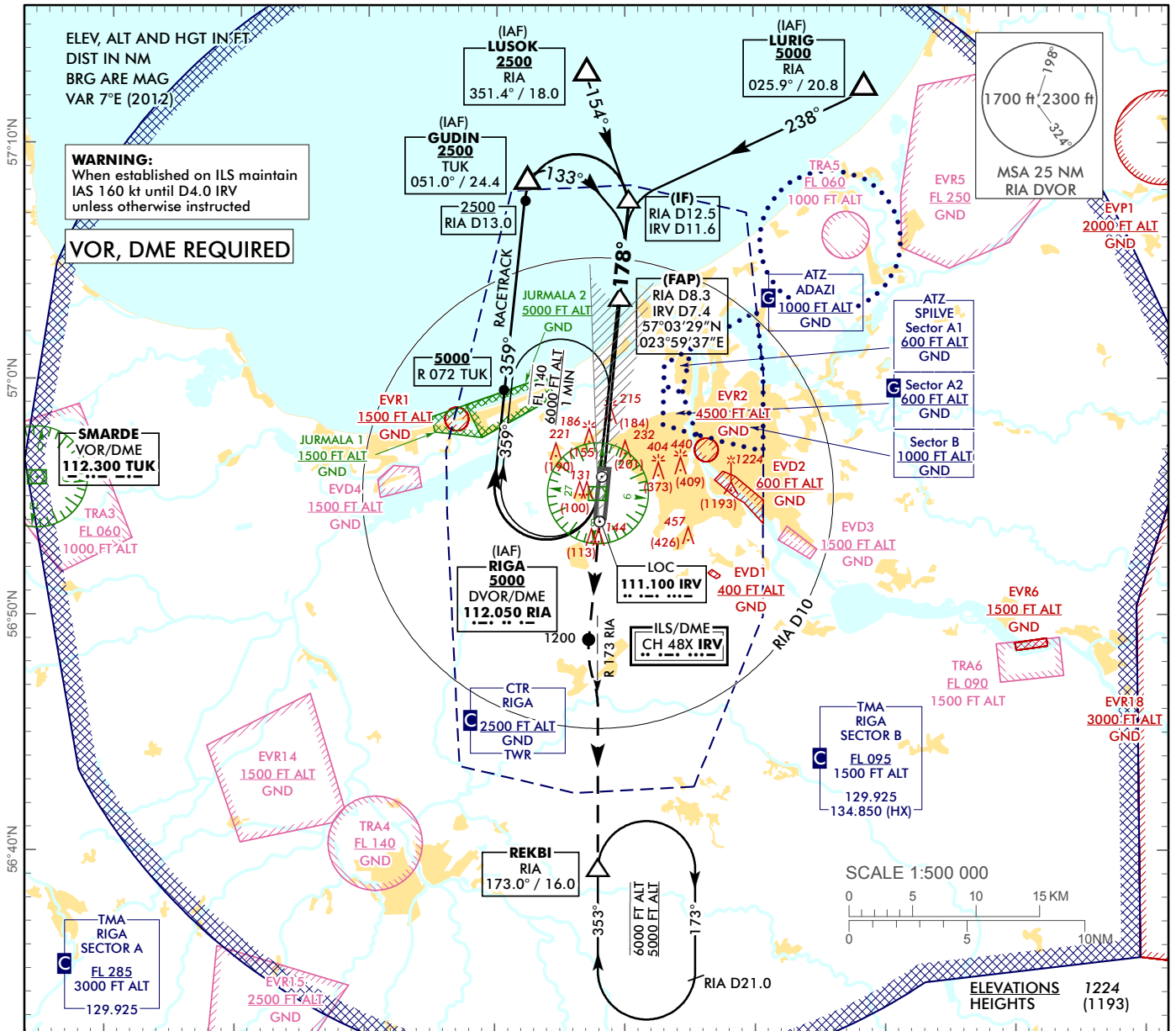


**INSTRUMENT  
APPROACH  
CHART - ICAO**

**AERODROME ELEV 36 ft  
HEIGHTS RELATED TO  
THR RWY 18 - ELEV 31 ft**

APP	129.925
TWR	118.105
ATIS	120.180
	134.850 (HX)

**RIGA (EVRA)  
ILS RWY 18**

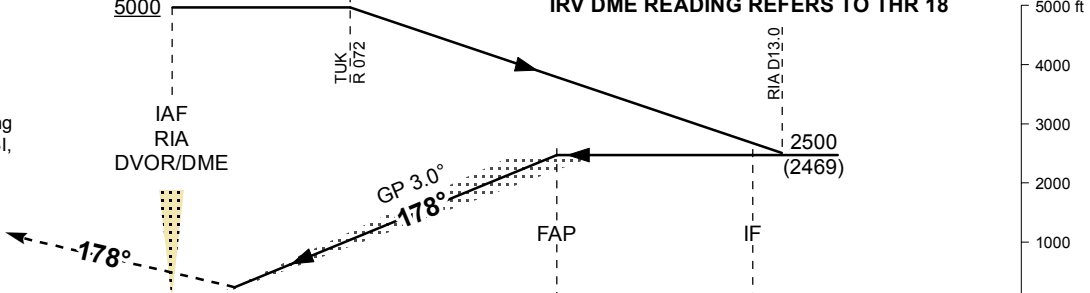


TRANSITION ALT 5000

**MISSED APPROACH**

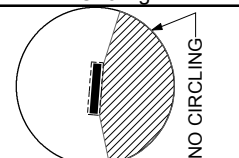
Climb on track 178° to 1200 then turn LEFT for intercepting RIA R 173. Proceed to REKBI, climbing to 2500 and follow ATC instructions.

ILS RDH 52  
THR ELEV 31



OCA (H)		A	B	C	D	DME IRV	7	6	5	4	3	2	1
Straight-in	ILS Cat I	231 (200)				DME RIA	7.9	6.9	5.9	4.9	3.9	2.9	1.9
	ILS Cat II	(85)	(102)	(115)	(129)	DIST THR	7	6	5	4	3	2	1
Circling		530 (500)		730 (690)		ALTITUDE	2360	2030	1700	1380	1050	730	410
						HEIGHT	(2229)	(1999)	(1669)	(1349)	(1019)	(699)	(379)
						GS	kt	80	100	120	140	160	180
						Rate of descent	ft/min	420	530	640	740	850	960

**REMARK:**  
 xxx - JURMALA 1, 2 - noise abatement areas (Ref. EVRA AD 2.21)  
 HX - No specific working hours



Changes: TWR and ATIS FREQ updated, editorial.

RIGA (EVRA)

ILS RWY 18

AERONAUTICAL DATA TABULATION

ILS approach to RWY18 from RIA DVOR/DME, GUDIN, LURIG, LUSOK	
Fix/point	Coordinates
RIA DVOR/DME (IAF)	56°55'15.1"N 023°57'54.7"E
GUDIN (IAF) R051.00° D24.40 TUK	57°08'38.9"N 023°52'24.0"E
LURIG (IAF) R025.92° D20.77 RIA	57°12'37.6"N 024°18'40.4"E
LUSOK (IAF) R351.43° D18.05 RIA	57°13'15.3"N 023°57'00.1"E
RIA D8.31 IRV D7.44 (FAP)	57°03'29.7"N 023°59'37.1"E
RIA D12.47 IRV D11.59 (IF)	57°07'37.4"N 024°00'18.6"E
REKBI (Holding) R172.99° D16.01 RIA	56°39'16.7"N 023°57'55.0"E
THR RWY 18	56°56'06.25"N 023°58'23.07"E
IRV LOC	56°54'04.3"N 023°58'03.0"E
TUK VOR/DME	56°55'50.1"N 023°14'23.9"E