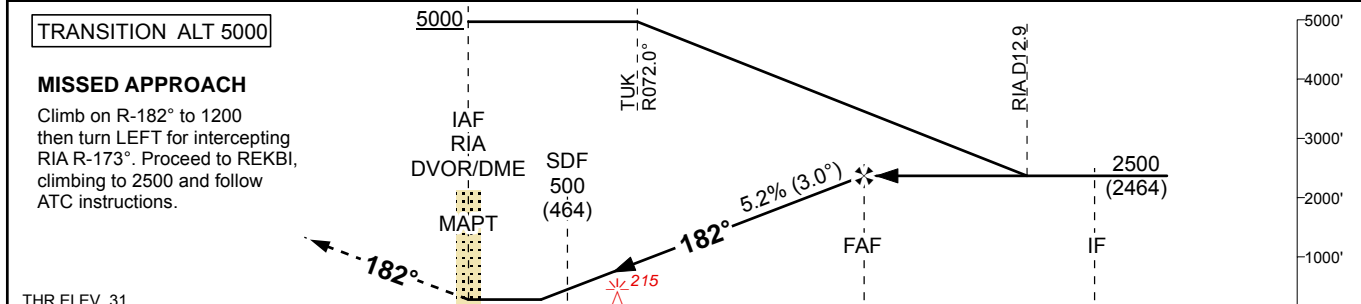
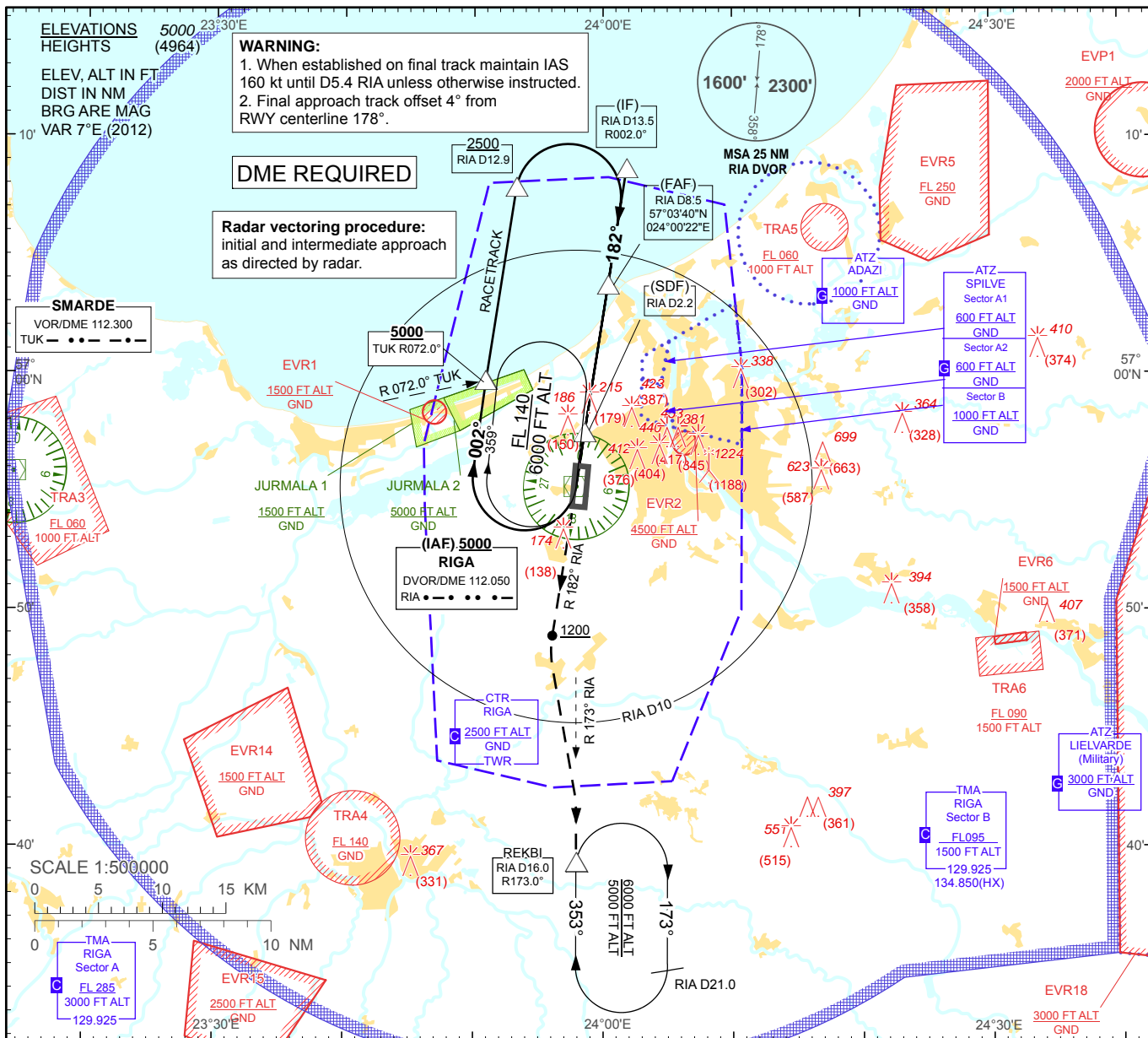


**INSTRUMENT
APPROACH
CHART - ICAO**

AERODROME ELEV 36'
HEIGHTS RELATED TO
AD - ELEV 36'

APP 129.925
134.850(HX)
TWR 118.100
ATIS 120.175

RIGA (EVRA)
VOR RWY 18



THR ELEV 31	NM from THR RWY 18	6	5	4	3	2	1	0	1.3	2	3	4	5	6	7	7.6	8	9	10	11	12	12.6	13	14	15	16
-------------	--------------------	---	---	---	---	---	---	---	-----	---	---	---	---	---	---	-----	---	---	----	----	----	------	----	----	----	----

Aircraft Category		A	B	C	D	DME RIA	8	7	6	5	4	3	2
Straight-in Approach OCA(H)	VOR/DME	410 (380)				DIST THR	7.1	6.1	5.1	4.1	3.1	2.1	1.1
	Circling	530 (500)		730 (690)		ALTITUDE	2330	2010	1690	1380	1060	750	430
						HEIGHT	(2294)	(1974)	(1654)	(1344)	(1024)	(714)	(394)

REMARK:

- JURMALA 1, 2 - noise abatement areas (Ref. EVRA AD 2.21)
- HX - No specific working hours
- For data tabulation see verso

Timing not authorized for defining the MAPT

GS	Kt	80	100	120	140	160	180
Rate of desc.(5.2%)	ft/min	420	530	630	740	840	950
FAF-MAPT (8.5 NM)	min:sec	06:25	05:08	04:16	03:40	03:12	02:51

Changes: editorial.

RIGA (EVRA)

VOR RWY 18

AERONAUTICAL DATA TABULATION

VOR approach to RWY 18 from RIA DVOR/DME (IAF)	
Fix/point	Coordinates
RIA DVOR/DME (IAF), (MAPT)	56°55'15.1"N 023°57'54.7"E
(IF) R002.00° D13.54 RIA	57°08'35.9"N 024°01'48.1"E
(FAF) R002.00° D8.54 RIA	57°03'40.2"N 024°00'21.5"E
(SDF) R002.00° D2.21 RIA	56°57'25.8"N 023°58'32.6"E
REKBI (Holding) R172.99° D16.01 RIA	56°39'16.7"N 023°57'55.0"E
THR RWY 18	56°56'06.25"N 023°58'23.07"E
Final approach descent angle is 2.98°	