

**STANDARD DEPARTURE CHART -
INSTRUMENT (SID) - ICAO**

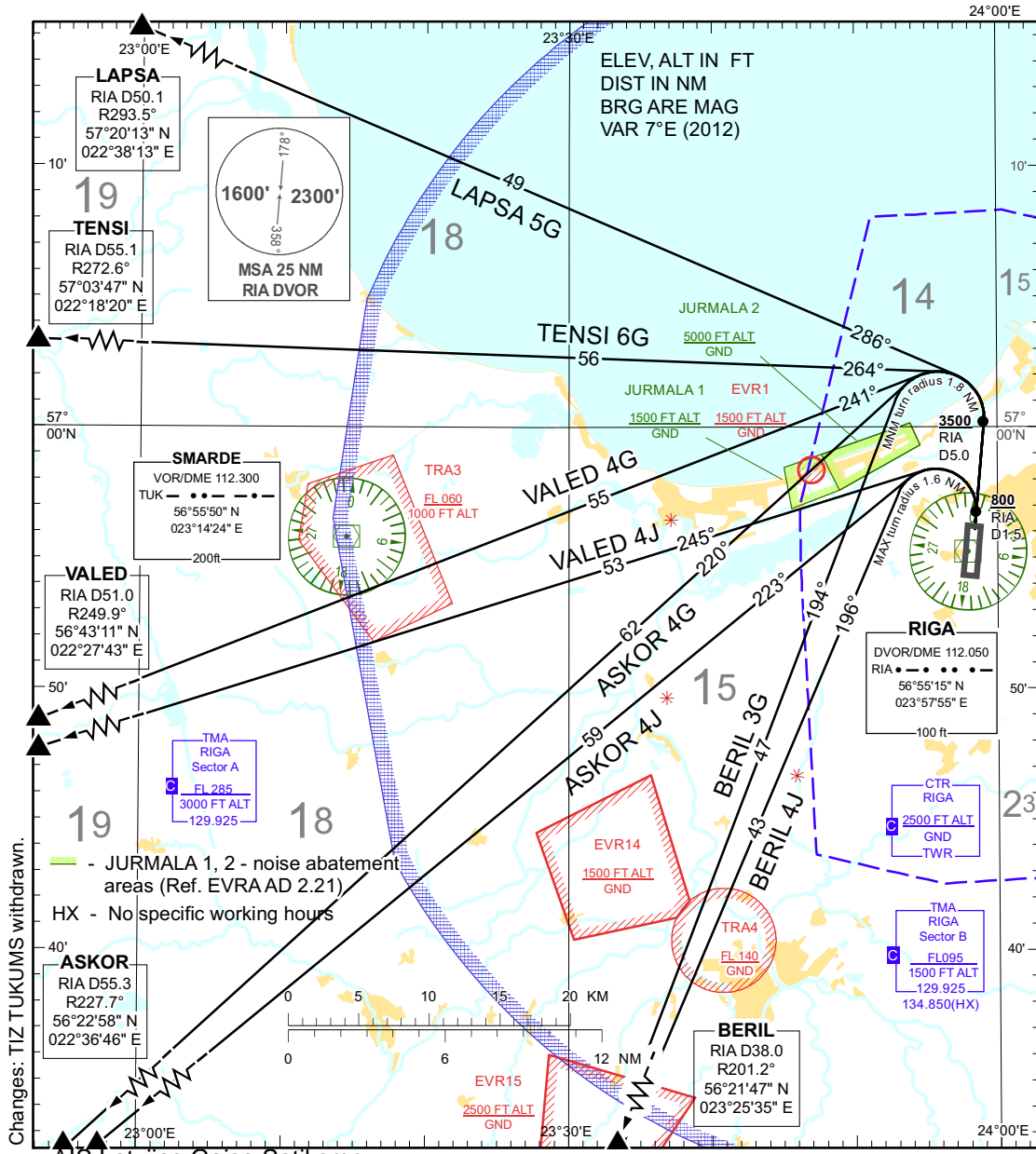
TRANSITION ALTITUDE
5000 ft

APP 129.925
134.850(HX)
TWR 118.100
ATIS 120.175
ACC 133.200

**RIGA (EVRA)
RWY 36**

(direction WEST)

ASKOR 4J ASKOR 4G BERIL 3G BERIL 4J
LAPSA 5G TENSI 6G VALED 4J VALED 4G



Coded designator	Plain language designator / Routing	Procedure Design Gradients (PDG) & Altitudes
ASKOR 4G	ASKOR FOUR GOLF DEPARTURE Climb straight ahead on TR 358°. Not before 5.0 DME RIA at or above 3500 FT turn left (MNM turn radius 1.8 NM). Establish TR 220°. Proceed to ASKOR	PDG 7.0% to 4000 FT to avoid noise abatement area. PDG 3.3% to be clear of obstacles.
ASKOR 4J	ASKOR FOUR JULIETT DEPARTURE Climb straight ahead on TR 358°. At 1.5 DME RIA at or above 800 FT turn left (MAX turn radius 1.6 NM). Establish TR 223°. Proceed to ASKOR	PDG 7.0% to 4000 FT to avoid unnecessary noise disturbance. PDG 3.3% to be clear of obstacles.
BERIL 3G	BERIL THREE GOLF DEPARTURE Climb straight ahead on TR 358°. Not before 5.0 DME RIA at or above 3500 FT turn left (MNM turn radius 1.8 NM). Establish TR 194°. Proceed to BERIL	PDG 7.0% to 4000 FT to avoid noise abatement area. PDG 3.3% to be clear of obstacles.
BERIL 4J	BERIL FOUR JULIETT DEPARTURE Climb straight ahead on TR 358°. At 1.5 DME RIA at or above 800 FT turn left (MAX turn radius 1.6 NM). Establish TR 196°. Proceed to BERIL	PDG 7.0% to 4000 FT to avoid unnecessary noise disturbance. PDG 3.3% to be clear of obstacles.
LAPSA 5G	LAPSA FIVE GOLF DEPARTURE Climb straight ahead on TR 358°. Not before 5.0 DME RIA at or above 3500 FT turn left (MNM turn radius 1.8 NM). Establish TR 286°. Proceed to LAPSA	PDG 5.0% to 4000 FT to avoid unnecessary noise disturbance. PDG 3.3% to be clear of obstacles.
TENSI 6G	TENSI SIX GOLF DEPARTURE Climb straight ahead on TR 358°. Not before 5.0 DME RIA at or above 3500 FT turn left (MNM turn radius 1.8 NM). Establish TR 264°. Proceed to TENSI	PDG 5.0% to 4000 FT to avoid unnecessary noise disturbance. PDG 3.3% to be clear of obstacles.
VALED 4G	VALED FOUR GOLF DEPARTURE Climb straight ahead on TR 358°. Not before 5.0 DME RIA at or above 3500 FT turn left (MNM turn radius 1.8 NM). Establish TR 241°. Proceed to VALED	PDG 5.0% to 4000 FT to avoid unnecessary noise disturbance. PDG 3.3% to be clear of obstacles.
VALED 4J	VALED FOUR JULIETT DEPARTURE Climb straight ahead on TR 358°. At 1.5 DME RIA at or above 800 FT turn left (MAX turn radius 1.6 NM). Establish TR 245°. Proceed to VALED	PDG 7.0% to 4000 FT to avoid unnecessary noise disturbance. PDG 3.3% to be clear of obstacles.

For detailed description of the conditions and flights procedures refer to AIP EVRA AD 2.22.

- NOTE:**
1. Initial climb clearance 4000 FT unless otherwise is instructed by TWR;
 2. Contact APP not later than passing 1500 ft after take-off;
 3. Contact APP on 129.925 unless other frequency assigned by TWR;
 4. MAX IAS 250 kt below FL 100;
 5. If unable to comply SID contact ATC.
 6. *SIDs ASKOR 4J, BERIL 4J, VALED 4J only for cat A, B, C;

Changes: TIZ TUKUMS withdrawn.

INTENTIONALLY LEFT BLANK