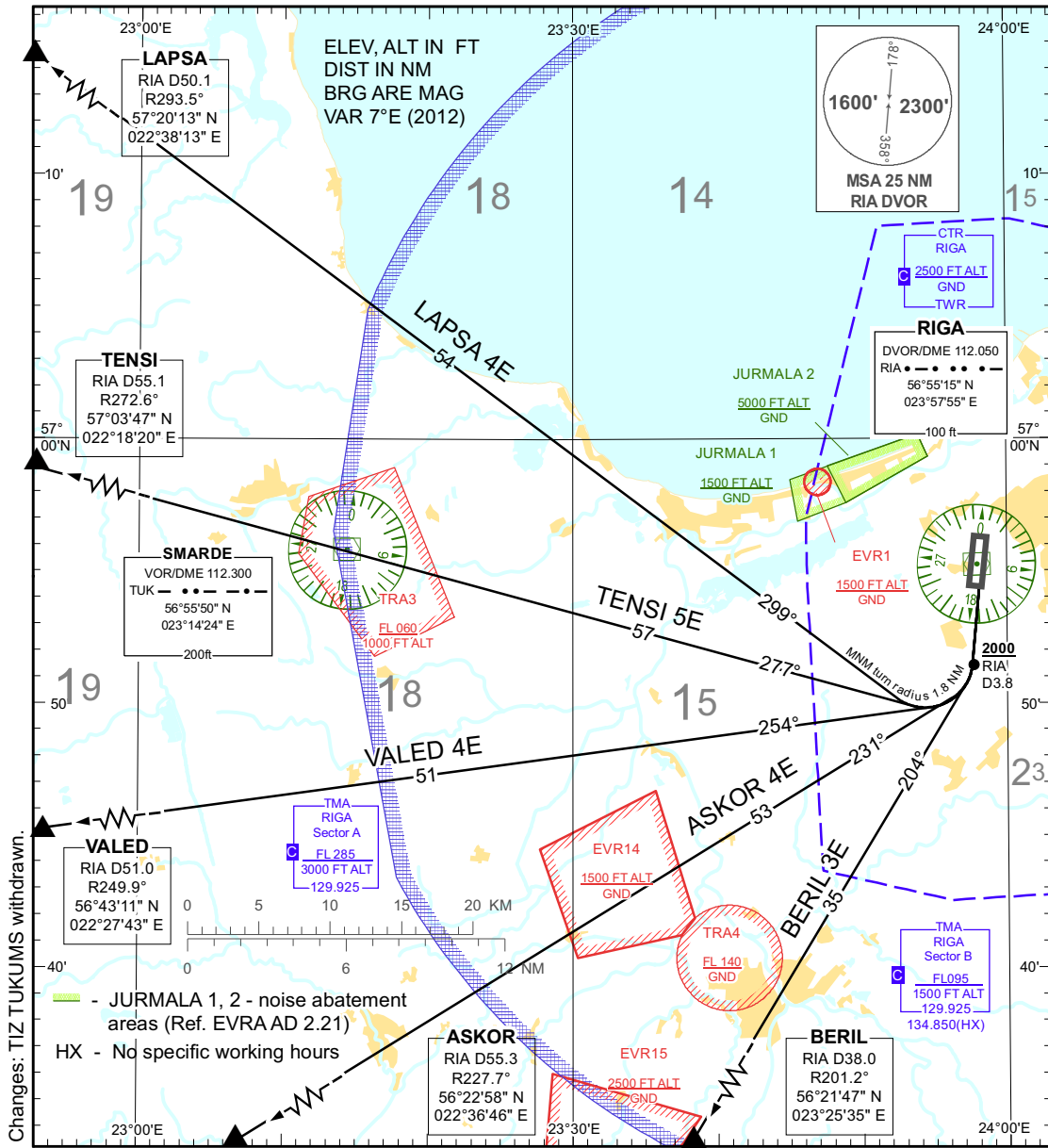


**STANDARD DEPARTURE CHART -
INSTRUMENT (SID) - ICAO**

TRANSITION ALTITUDE
5000 ft

APP 129.925
134.850(HX)
TWR 118.100
ATIS 120.175
ACC 133.200

**RIGA (EVRA)
RWY 18**
(direction WEST)
ASKOR 4E BERIL 3E LAPSA 4E
TENSI 5E VALED 4E



Coded designator	Plain language designator / Routing	Procedure Design Gradients (PDG) & Altitudes
ASKOR 4E	ASKOR FOUR ECHO DEPARTURE Climb straight ahead on TR 178°. Not before 3.8 DME RIA at or above 2000 FT turn right (MNM turn radius 1.8 NM). Establish TR 231°. Proceed to ASKOR.	PDG 5.0% to 4000 FT to avoid unnecessary noise disturbance. PDG 3.3% to be clear of obstacles.
BERIL 3E	BERIL THREE ECHO DEPARTURE Climb straight ahead on TR 178°. Not before 3.8 DME RIA at or above 2000 FT turn right (MNM turn radius 1.8 NM). Establish TR 204°. Proceed to BERIL.	PDG 5.0% to 4000 FT to avoid unnecessary noise disturbance. PDG 3.3% to be clear of obstacles.
LAPSA 4E	LAPSA FOUR ECHO DEPARTURE Climb straight ahead on TR 178°. Not before 3.8 DME RIA at or above 2000 FT turn right (MNM turn radius 1.8 NM). Establish TR 299°. Proceed to LAPSA.	PDG 5.0% to 4000 FT to avoid unnecessary noise disturbance. PDG 3.3% to be clear of obstacles.
TENSI 5E	TENSI FIVE ECHO DEPARTURE Climb straight ahead on TR 178°. Not before 3.8 DME RIA at or above 2000 FT turn right (MNM turn radius 1.8 NM). Establish TR 277°. Proceed to TENSI.	PDG 5.0% to 4000 FT to avoid unnecessary noise disturbance. PDG 3.3% to be clear of obstacles.
VALED 4E	VALED FOUR ECHO DEPARTURE Climb straight ahead on TR 178°. Not before 3.8 DME RIA at or above 2000 FT turn right (MNM turn radius 1.8 NM). Establish TR 254°. Proceed to VALED.	PDG 5.0% to 4000 FT to avoid unnecessary noise disturbance. PDG 3.3% to be clear of obstacles.

For detailed description of the conditions and flights procedures refer to AIP EVRA AD 2.22.

- NOTE:**
1. Initial climb clearance 4000 FT unless otherwise is instructed by TWR;
 2. Contact APP not later than passing 1500 ft after take-off;
 3. Contact APP on 129.925 unless other frequency assigned by TWR;
 4. MAX IAS 250 kt below FL 100;
 5. If unable to comply SID contact ATC.

INTENTIONALLY LEFT BLANK