

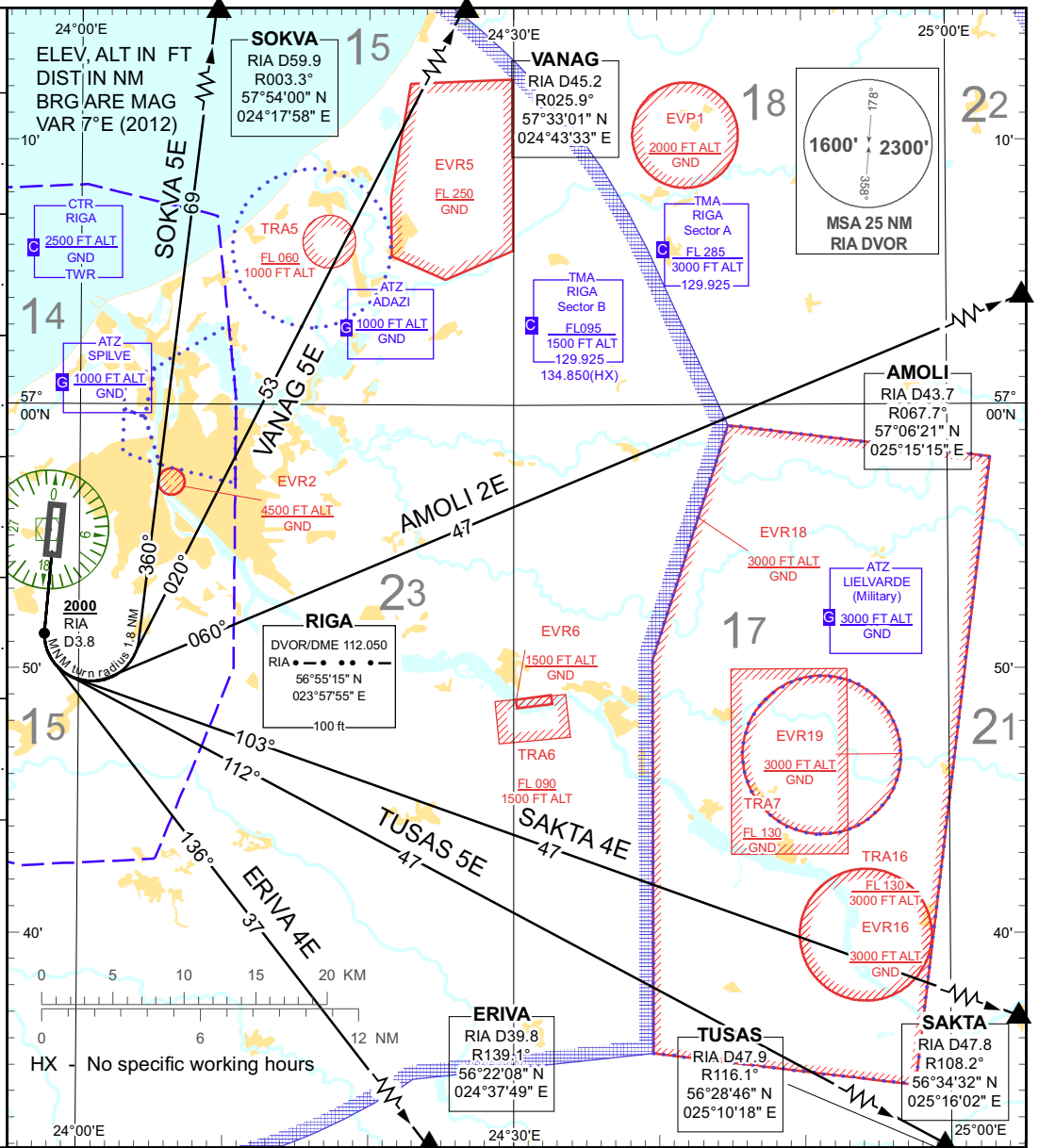
**STANDARD DEPARTURE CHART -
INSTRUMENT (SID) - ICAO**

TRANSITION ALTITUDE
5000 ft

APP 129.925
134.850(HX)
TWR 118.100
ATIS 120.175
ACC 133.200

**RIGA (EVRA)
RWY 18**
direction (EAST)
AMOLI 2E ERIVA 4E SAKTA 4E
SOKVA 5E TUSAS 5E VANAG 5E

Coded designator	Plain language designator / Routing	Procedure Design Gradients (PDG) & Altitudes
AMOLI 2E	AMOLI TWO ECHO DEPARTURE Climb straight ahead on TR 178°. Not before 3.8 DME RIA at or above 2000 FT turn left (MNM turn radius 1.8 NM). Establish TR 060°. Proceed to AMOLI.	PDG 5.0% to 4000 FT to avoid unnecessary noise disturbance. PDG 3.3% to be clear of obstacles.
ERIVA 4E	ERIVA FOUR ECHO DEPARTURE Climb straight ahead on TR 178°. Not before 3.8 DME RIA at or above 2000 FT turn left (MNM turn radius 1.8 NM). Establish TR 136°. Proceed to ERIVA.	PDG 5.0% to 4000 FT to avoid unnecessary noise disturbance. PDG 3.3% to be clear of obstacles.
SAKTA 4E	SAKTA FOUR ECHO DEPARTURE Climb straight ahead on TR 178°. Not before 3.8 DME RIA at or above 2000 FT turn left (MNM turn radius 1.8 NM). Establish TR 103°. Proceed to SAKTA.	PDG 5.0% to 4000 FT to avoid unnecessary noise disturbance. PDG 3.3% to be clear of obstacles.
SOKVA 5E	SOKVA FIVE ECHO DEPARTURE Climb straight ahead on TR 178°. Not before 3.8 DME RIA at or above 2000 FT turn left (MNM turn radius 1.8 NM). Establish TR 360°. Proceed to SOKVA.	PDG 7.0% to 4000 FT to avoid unnecessary noise disturbance. PDG 3.3% to be clear of obstacles.
TUSAS 5E	TUSAS FIVE ECHO DEPARTURE Climb straight ahead on TR 178°. Not before 3.8 DME RIA at or above 2000 FT turn left (MNM turn radius 1.8 NM). Establish TR 112°. Proceed to TUSAS.	PDG 5.0% to 4000 FT to avoid unnecessary noise disturbance. PDG 3.3% to be clear of obstacles.
VANAG 5E	VANAG FIVE ECHO DEPARTURE Climb straight ahead on TR 178°. Not before 3.8 DME RIA at or above 2000 FT turn left (MNM turn radius 1.8 NM). Establish TR 020°. Proceed to VANAG.	PDG 7.0% to 4000 FT to avoid unnecessary noise disturbance. PDG 3.3% to be clear of obstacles.



HX - No specific working hours

Changes: editorial.

INTENTIONALLY LEFT BLANK