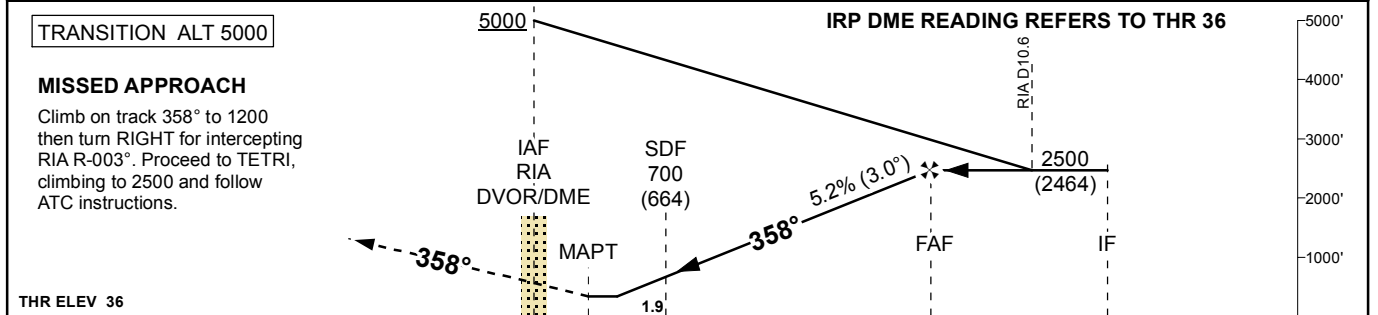
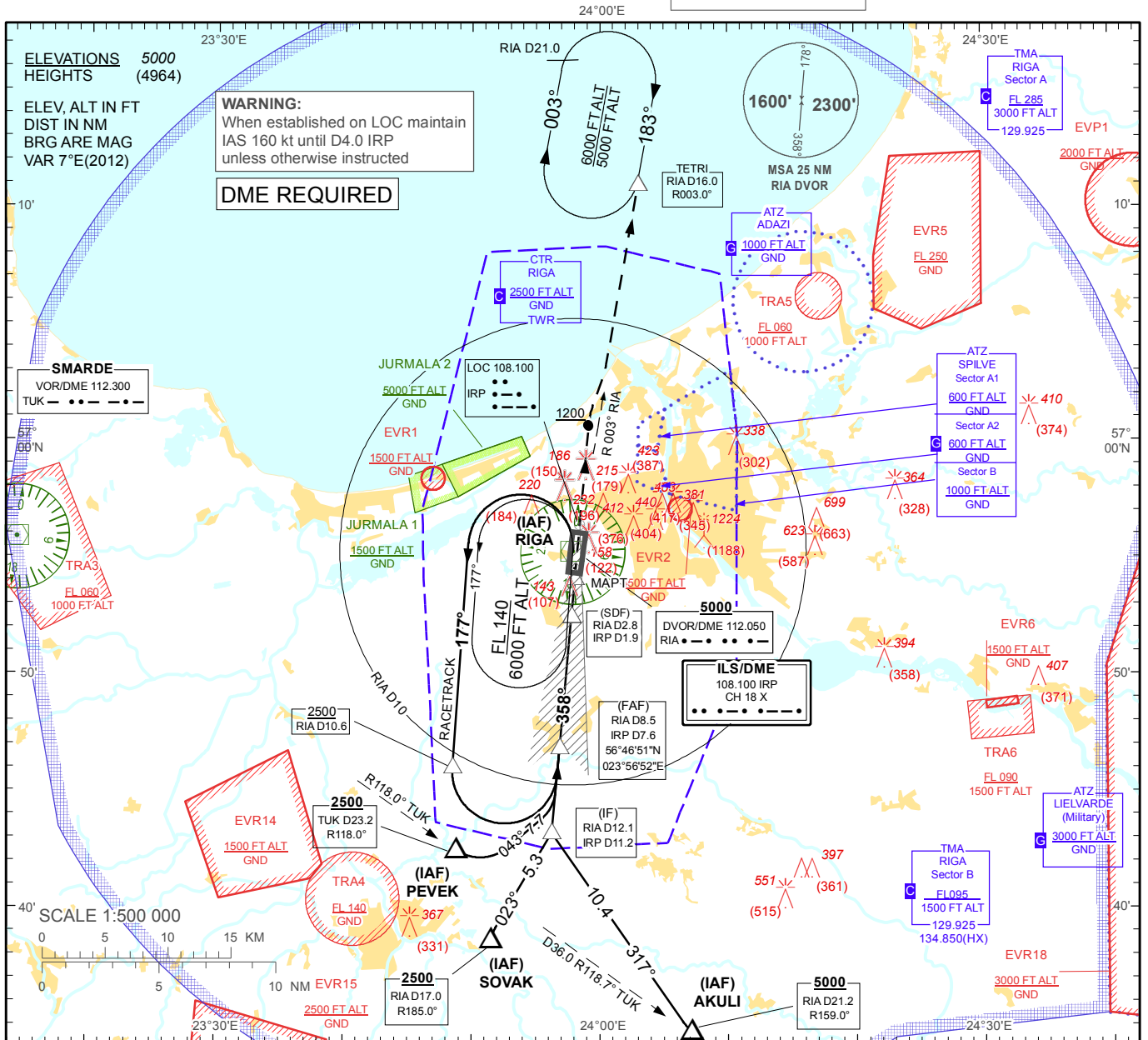


**INSTRUMENT
APPROACH
CHART - ICAO**

AERODROME ELEV 36'
HEIGHTS RELATED TO
AD - ELEV 36'

APP 129.925
134.850(HX)
TWR 118.100
ATIS 120.175

RIGA (EVRA)
LOC RWY 36



TRANSITION ALT 5000

IRP DME READING REFERS TO THR 36

MISSED APPROACH
Climb on track 358° to 1200 then turn RIGHT for intercepting RIA R-003°. Proceed to TETRI, climbing to 2500 and follow ATC instructions.

THR ELEV 36

NM from THR RWY 36	8	7	6	5	4	3	2	1	0.3	1	2	3	4	5	6	7	7.6	8	9	10	11.2	12	13	14
Aircraft Category	A		B		C		D		DME IRP	7	6	5	4	3	2	1								
Straight-in Approach OCA(H)	LOC		390 (360)		DME RIA		7.9	6.9	5.9	4.9	3.9	2.9	1.9											
	Circling		530 (500)		730 (690)		ALTITUDE	2310	1990	1670	1350	1040	720	400										
REMARK: - JURMALA 1, 2 - noise abatement areas (Ref. EVRA AD 2.21) HX - No specific working hours For data tabulation see verso		HEIGHT		(2274)	(1954)	(1634)	(1314)	(1004)	(684)	(364)	Timing not authorized for defining the MAPT													
		GS	Kt	80	100	120	140	160	180															
		Rate of descent (5.2%)		ft/min	420	530	640	740	850	960														
		FAF-MAPT(7.3 NM)		min:sec	05:29	04:23	03:39	03:08	02:44	02:26														

Changes: TIZ TUKUMS withdrawn.

RIGA (EVRA)

LOC RWY 36

AERONAUTICAL DATA TABULATION

LOC approach to RWY36 from RIA DVOR/DME, AKULI, PEVEK, SOVAK	
Fix/point	Coordinates
RIA DVOR/DME (IAF)	56°55'15.1"N 023°57'54.7"E
AKULI (IAF) R118.68° D35.95 TUK	56°34'43.5"N 024°07'12.3"E
PEVEK (IAF) R118.00° D23.17 TUK	56°42'29.7"N 023°48'50.1"E
SOVAK (IAF) R184.95° D17.02 RIA	56°38'37.8"N 023°51'31.5"E
RIA D12.09 IRP D11.24 (IF)	56°43'13.0"N 023°56'15.9"E
RIA D8.44 IRP D7.59 (FAF)	56°46'50.8"N 023°56'51.6"E
RIA D2.79 IRP D1.93 (SDF)	56°52'28.0"N 023°57'47.1"E
RIA D1.17 IRP D0.30 (MAPT)	56°54'05.3"N 023°58'03.1"E
TETRI (Holding) R003.00° D16.00 RIA	57°10'58.4"N 024°03'01.1"E
THR RWY 36	56°54'23.22"N 023°58'06.08"E
IRP LOC	56°56'24.9"N 023°58'26.2"E
TUK VOR/DME	56°55'50.1"N 023°14'23.9"E
Final approach descent angle is 3.00°	