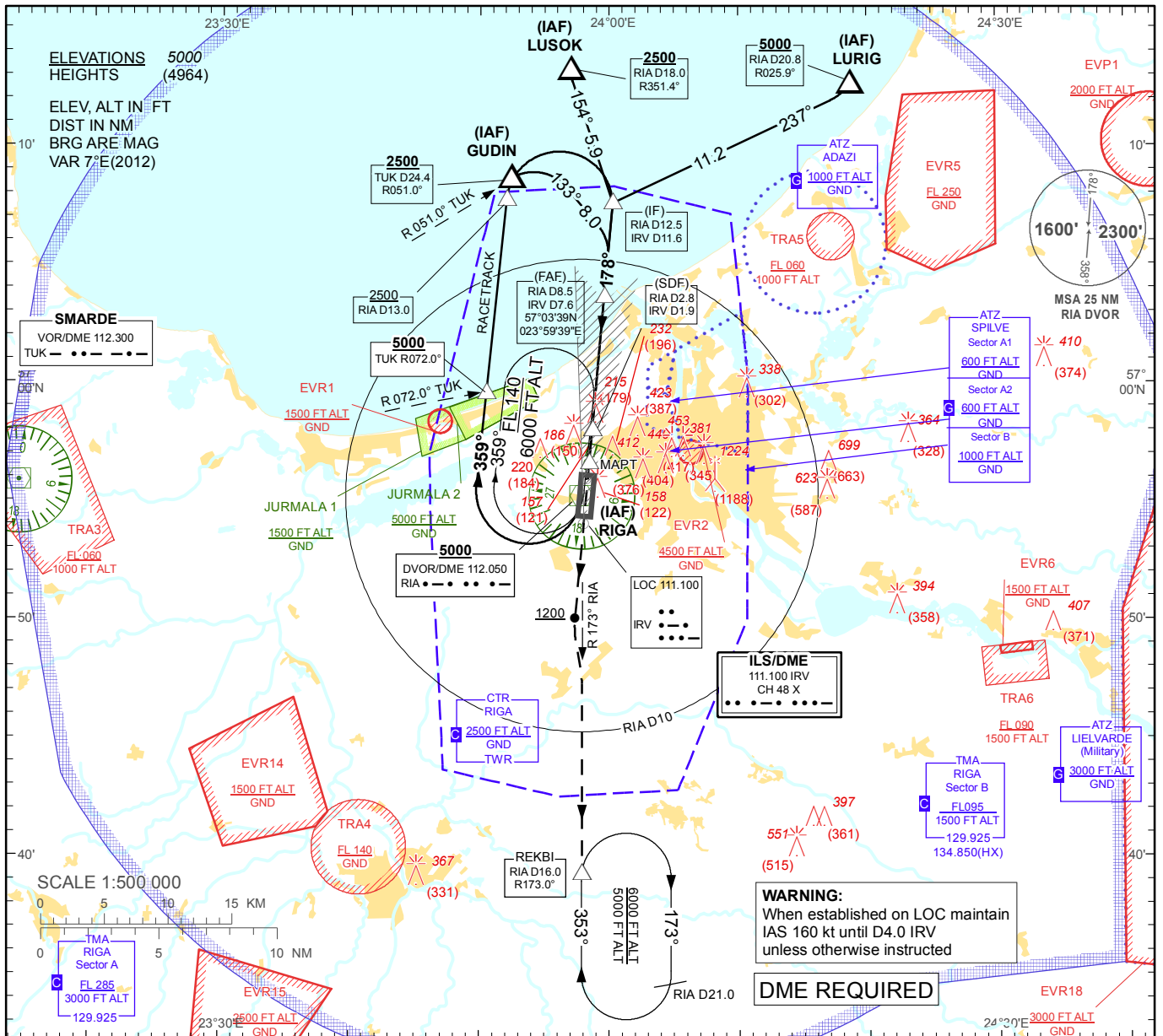


**INSTRUMENT
APPROACH
CHART - ICAO**

AERODROME ELEV 36'
HEIGHTS RELATED TO
AD - ELEV 36'

APP 129.925
134.850(HX)
TWR 118.100
ATIS 120.175

RIGA (EVRA)
LOC RWY 18



TRANSITION ALT 5000

IRV DME READING REFERS TO THR 18

MISSED APPROACH
Climb on track 178° to 1200 then turn LEFT for intercepting RIA R-173°. Proceed to REKBI, climbing to 2500 and follow ATC instructions.

THR ELEV 31

NM from THR RWY 18	6	5	4	3	2	1	0.5	1	2	3	4	5	6	7	7.6	8	9	10	11	11.6	12	13	14	15	16
Aircraft Category	A		B		C		D		DME IRV		7	6	5	4	3	2	1								
Straight-in Approach OCA(H)	LOC		410 (370)		DME RIA		7.9	6.9	5.9	4.9	3.9	2.9	1.9												
	Circling		530 (500)		730 (690)		DIST THR		7	6	5	4	3	2	1										
		REMARK: - JURMALA 1, 2 - noise abatement areas (Ref. EVRA AD 2.21) HX - No specific working hours																							
		Timing not authorized for defining the MAPT																							
GS	Kt	80	100	120	140	160	180																		
Rate of descent (5.2%)	ft/min	420	530	640	740	850	960																		
FAF-MAPT(7.1 NM)	min:sec	05:20	04:16	03:33	03:03	02:40	02:22																		

Changes: TIZ TUKUMS withdrawn.

RIGA (EVRA)

LOC RWY 18

AERONAUTICAL DATA TABULATION

LOC approach to RWY18 from RIA DVOR/DME, GUDIN, LURIG, LUSOK	
Fix/point	Coordinates
RIA DVOR/DME (IAF)	56°55'15.1"N 023°57'54.7"E
GUDIN (IAF) R051.00° D24.41 TUK	57°08'38.9"N 023°52'24.0"E
LURIG (IAF) R025.92° D20.78 RIA	57°12'37.6"N 024°18'40.4"E
LUSOK (IAF) R351.43° D18.05 RIA	57°13'15.3"N 023°57'00.1"E
RIA D12.47 IRV D11.60 (IF)	57°07'37.4"N 024°00'18.6"E
RIA D8.48 IRV D7.60 (FAF)	57°03'39.5"N 023°59'38.7"E
RIA D2.83 IRV D1.95 (SDF)	56°58'02.3"N 023°58'42.5"E
RIA D1.39 IRV D0.50 (MAPT)	56°56'36.1"N 023°58'28.1"E
REKBI (Holding) R172.99° D16.01 RIA	56°39'16.7"N 023°57'55.0"E
THR RWY 18	56°56'06.25"N 023°58'23.07"E
IRV LOC	56°54'04.3"N 023°58'03.0"E
TUK VOR/DME	56°55'50.1"N 023°14'23.9"E
Final approach descent angle is 3.00°	