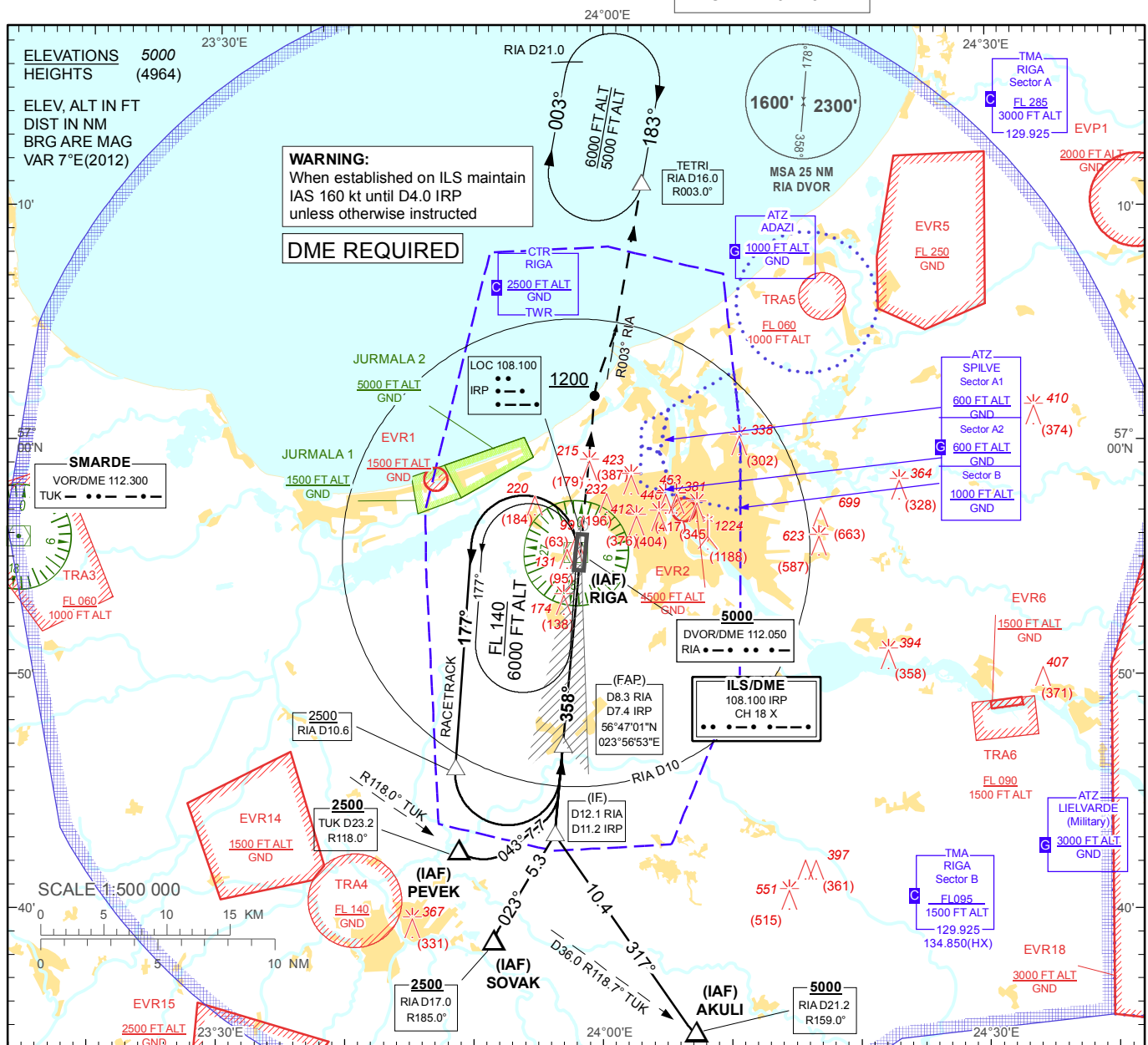


**INSTRUMENT
APPROACH
CHART - ICAO**

AERODROME ELEV 36'
HEIGHTS RELATED TO
THR RWY 36 - ELEV 36'

APP 129.925
134.850(HX)
TWR 118.100
ATIS 120.175

RIGA (EVRA)
ILS RWY 36 (CAT I & II)



TRANSITION ALT 5000

MISSED APPROACH

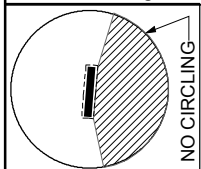
Climb on track 358° to 1200 then turn RIGHT for intercepting RIA R-003°. Proceed to TETRI, climbing to 2500 and follow ATC instructions.

ILS RDH 52

THR ELEV 36

NM from THR RWY 36 8 7 6 5 4 3 2 1 0 1 2 3 4 5 6 7.4 8 9 10 11.2 12 13 14

Aircraft Category	A	B	C	D	DME IRP	7	6	5	4	3	2	1	
Straight-in Approach OCA(H)	ILS Cat. I	236 (200)				DME RIA	7.9	6.9	5.9	4.9	3.9	2.9	1.9
	ILS Cat. II	97 (61)	115 (79)	127 (91)	142 (106)	DIST THR	7	6	5	4	3	2	1
Circling	530 (500)		730 (690)			ALTITUDE	2360	2030	1700	1380	1050	730	410
						HEIGHT	(2324)	(1994)	(1664)	(1344)	(1014)	(694)	(374)



REMARK:

— - JURMALA 1, 2 - noise abatement areas (Ref. EVRA AD 2.21)
HX - No specific working hours

For data tabulation see verso

GS	Kt	80	100	120	140	160	180
Rate of descent	ft/min	420	530	640	740	850	960

Changes: TIZ TUKUMS withdrawn.

RIGA (EVRA)

ILS RWY 36

AERONAUTICAL DATA TABULATION

ILS approach to RWY36 from RIA DVOR/DME, AKULI, PEVEK, SOVAK	
Fix/point	Coordinates
RIA DVOR/DME (IAF)	56°55'15.1"N 023°57'54.7"E
AKULI (IAF) R118.68° D35.95 TUK	56°34'43.5"N 024°07'12.3"E
PEVEK (IAF) R118.00° D23.17 TUK	56°42'29.7"N 023°48'50.1"E
SOVAK (IAF) R184.95° D17.02 RIA	56°38'37.8"N 023°51'31.5"E
RIA D8.28 IRP D7.42 (FAP)	56°47'00.6"N 023°56'53.2"E
RIA D12.09 IRP D11.24 (IF)	56°43'13.0"N 023°56'15.9"E
TETRI (Holding) R003.00° D16.00 RIA	57°10'58.4"N 024°03'01.1"E
THR RWY 36	56°54'23.22"N 023°58'06.08"E
IRP LOC	56°56'24.9"N 023°58'26.2"E
TUK VOR/DME	56°55'50.1"N 023°14'23.9"E