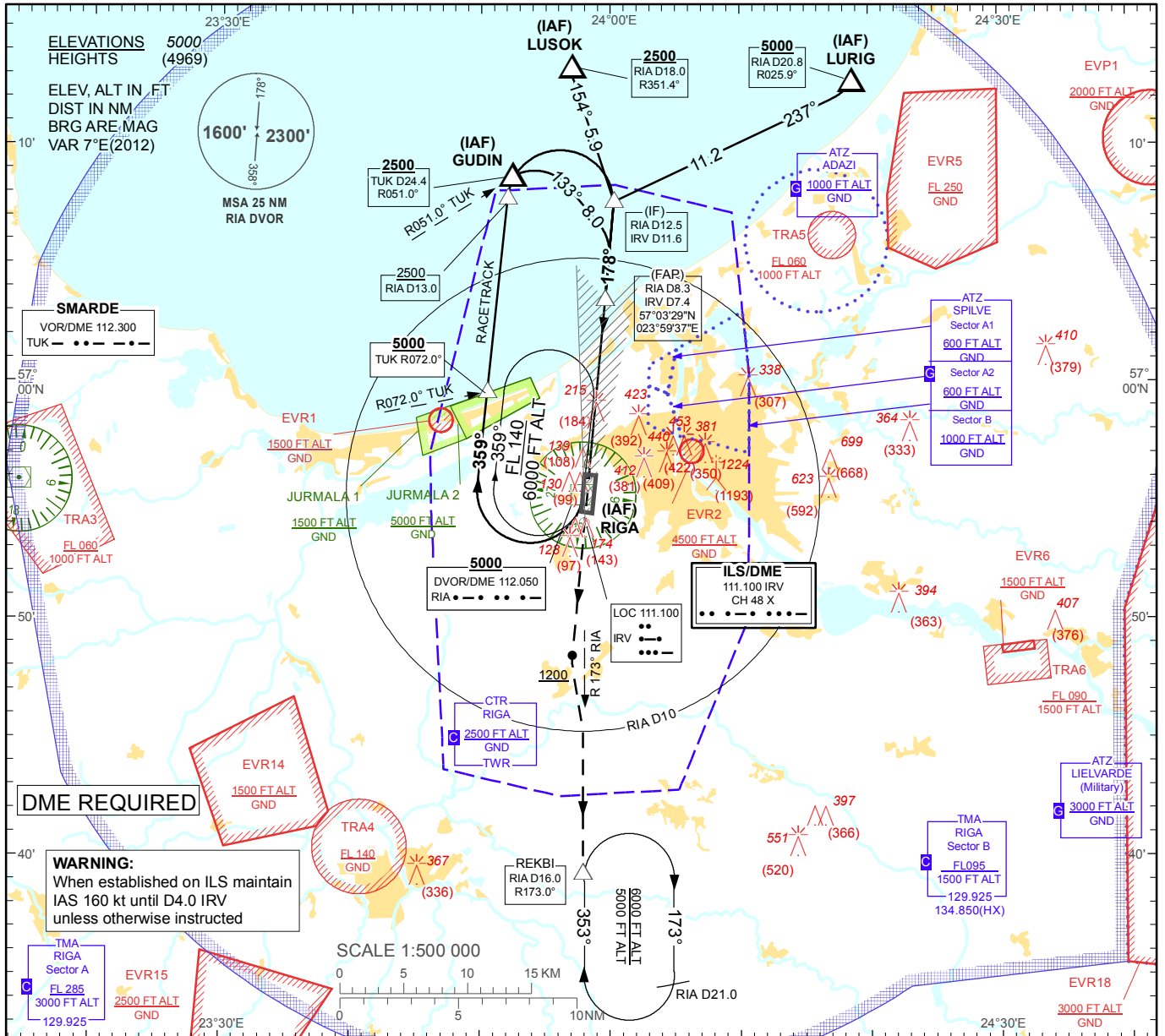


**INSTRUMENT  
APPROACH  
CHART - ICAO**

**AERODROME ELEV 36'  
HEIGHTS RELATED TO  
THR RWY 18 - ELEV 31'**

APP 129.925  
134.850(HX)  
TWR 118.100  
ATIS 120.175

**RIGA (EVRA)  
ILS RWY 18 (CAT I & II)**



Changes: TIZ TUKUMS withdrawn.

RIGA (EVRA)

ILS RWY 18

AERONAUTICAL DATA TABULATION

ILS approach to RWY18 from RIA DVOR/DME, GUDIN, LURIG, LUSOK	
Fix/point	Coordinates
RIA DVOR/DME (IAF)	56°55'15.1"N 023°57'54.7"E
GUDIN (IAF) R051.00° D24.41 TUK	57°08'38.9"N 023°52'24.0"E
LURIG (IAF) R025.92° D20.78 RIA	57°12'37.6"N 024°18'40.4"E
LUSOK (IAF) R351.43° D18.05 RIA	57°13'15.3"N 023°57'00.1"E
RIA D8.31 IRV D7.44 (FAP)	57°03'29.7"N 023°59'37.1"E
RIA D12.47 IRV D11.60 (IF)	57°07'37.4"N 024°00'18.6"E
REKBI (Holding) R172.99° D16.01 RIA	56°39'16.7"N 023°57'55.0"E
THR RWY 18	56°56'06.25"N 023°58'23.07"E
IRV LOC	56°54'04.3"N 023°58'03.0"E
TUK VOR/DME	56°55'50.1"N 023°14'23.9"E