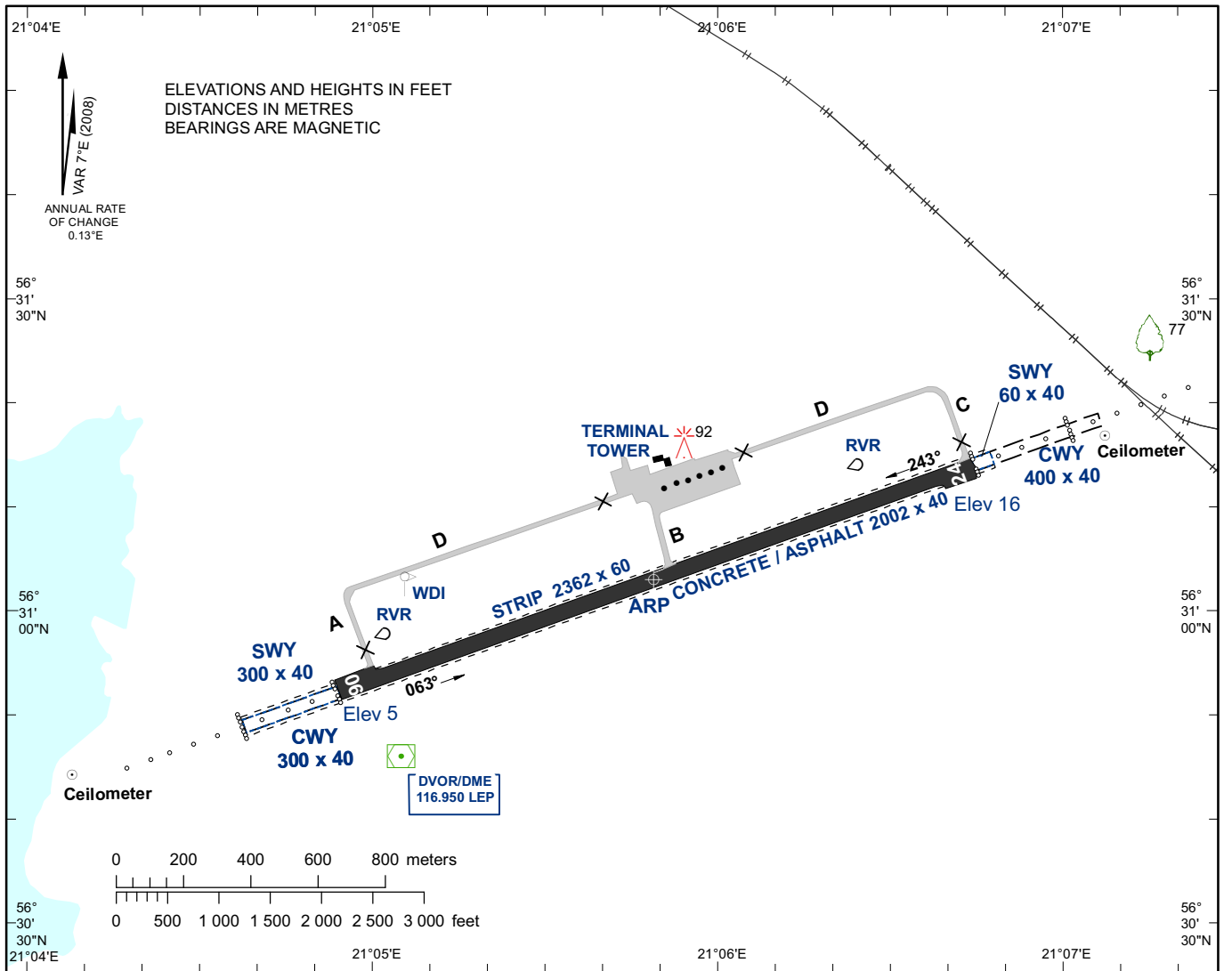
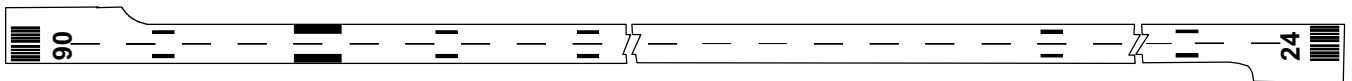


AERODROME CHART - ICAO **56°31'03"N** **ELEV 16'** **Information 129.400** **LIEPAJA**
021°05'49"E



RWY MARKING



TAXYWAYS		APRON		AERODROME LIGHTING			
WIDTH:	A, C, D 14m B 15m	SURFACE: Concrete / asphalt		APCH lights: RWY 06 Simple ALS 750m LIL RWY 24 Simple ALS 900m LIL			
SURFACE:	Concrete / asphalt	STRENGTH: PCN 22/F/C/Y/T		RWY lights: 75m white, last 600m yellow edge lights LIL green threshold lights red end lights			
STRENGTH:	A PCN 10/F/D/W/T B PCN 63/F/A/W/T C PCN 17/F/C/W/T D PCN 16/F/D/W/T						

RWY	TRUE DIRECTION	THR	BEARING STRENGTH	DECLARED DISTANCES			
				TORA	TODA	ASDA	LDA
06	070.26°	56°30'52.15"N 021°04'54.32"E	PCN 26/F/B/W/T Concrete / asphalt	2002	2402	2062	2002
24	250.29°	56°31'14.02"N 021°06'44.51"E		2002	2302	2302	2002

Changes: editorial.

INTENTIONALLY LEFT BLANK